



University of  
**Pittsburgh** | Bradford

## **SPRING 2025 Schedule of Classes**

**Enrollment Appointments Begins October 25th.**  
***Students need to check the Student Services Center***  
***for their assigned date and time to begin registering.***  
***Appointment with Academic Advisor required .***



# SPRING 2025 IMPORTANT DATES AND TUITION INFORMATION

## **FALL GRADUATE- DECEMBER**

Deadline to Apply (with \$25 fee) – December 1.

## **SPRING GRADUATE – APRIL**

Deadline to apply without late fee Nov 30.

Late fees begin (\$25) – December 1.

Deadline to Apply (with \$25 fee) – April 1.

## **THURSDAY, JANUARY 2**

University Offices open.

## **SUNDAY, JANUARY 5**

Resident Halls open 9:00am

## **WEDNESDAY, JANUARY 8**

Spring Term classes begin.

## **MONDAY, JANUARY 20**

Holiday- Observance of Dr. Martin Luther King’s birthday (No classes. University Offices Closed).

## **TUESDAY, JANUARY 21**

Last day to **ADD or DROP** a class.

Last day to declare **PASS FOR CREDIT** or **AUDIT** grade option.

## **JANUARY 22-28**

Extended drop period. Students may only drop a class if they will remain in full time status. Adding a course is not permitted.

## **SUMMER GRADUATE - JUNE**

May begins submission the prior spring- Feb 1.

Deadline to apply without late fee- March 31.

Late fees begin (\$25) - April 1

Deadline to Apply (with \$25 fee) - June 1.

## **SUMMER GRADUATE -AUGUST**

May begin submission the prior spring- February 1.

Deadline to apply without late fee-May 31<sup>st</sup>.

Late fees begin (\$25) - June 1.

Deadline to Apply (with \$25 fee) - August 1.

## **MONDAY, FEBRUARY 17**

Summer registration begins

## **MONDAY-FRIDAY, FEBRUARY 24-MARCH 2**

Mid-Term grades collected from faculty.

## **SAT-SUN, MARCH 2-9**

Spring recess for students.

## **FRIDAY, MARCH 7**

Spring Holiday, Offices closed.

## **TUESDAY, MARCH 11**

Last day to **WITHDRAW** from a course.

A “W” grade is assigned with no financial adjustment.

## **MONDAY, MARCH 17**

Begin advising for fall scheduling.

## **FRIDAY, MARCH 21**

Fall Term Enrollment Appointments begin (*Veterans and Athletes*).

## **MONDAY, MARCH 24**

Fall Term enrollment appointments begin.

## **FRIDAY, APRIL 4**

Last day to **RESIGN** from the University for Spring Term.

## **FRIDAY, APRIL 11, 2025**

Honors Convocation

## **TUESDAY, APRIL 22**

Last day of classes for Spring Term.

## **WEDNESDAY, APRIL 23**

Reading Day to prepare for exams

## **WEDNESDAY, APRIL 23**

Graduation Central,  
Frame-Westerberg Commons

## **THUR, FRI, MON –WED, APRIL 24-30**

### ***FINAL EXAMS***

Please see the final exam schedule in the back of this booklet.

## **WEDNESDAY, APRIL 30**

Spring term ends.

## **SATURDAY, MAY 3**

Graduation Reception

## **SUNDAY, MAY 4**

### **SPRING COMMENCEMENT**

***(MORE INFORMATION TO COME FROM STUDENT AFFAIRS).***

## **SATURDAY, MAY 3**

SPRING GRADES MUST BE POSTED BY FACULTY: 11:59PM

.....

## **BILLING INFORMATION**

Students and their Authorized Users will be notified by email periodically before the due date if there is a balance due on the student account. Students and Authorized Users may access PittPAY from [www.payments.pitt.edu](http://www.payments.pitt.edu) and should monitor the Account Summary to see your balance and due date.

There are options to pay your bill online or by mail. You are responsible for paying your balance by the posted due date. A late fee will be assessed when payment is not received by the due date. Collection Fees and Financial holds are also applied to past due accounts.

## STEPS TO REGISTER FOR YOUR FALL CLASSES

Self-Enrollment appointments begin on October 25th (approved veterans and athletes) and continues through November 8th based on the number of credits you have **earned**. Students may view their registration date/time on their Student Center or PeopleSoft/Highpoint CX dashboard. In addition, students may continue to add/drop courses up until the add/drop deadline of January 21<sup>st</sup>.

1. Check for your Enrollment Appointment Date (date and time you may initially register) Access the PeopleSoft/HighPoint CX through [myPitt](#) and look under Enrollment Date in your Student Center. Appointments are assigned according to the number of credits **earned**.
2. Contact your faculty advisor for directions to set up an appointment. It is mandatory that you meet or discuss your plans with your advisor. An Advising Hold has been placed on your account and may only be removed by your advisor once you have communicated with them.
3. Once you have your class choices and it is the day/time of your Enrollment Appointment, you may login [myPitt](#) to and register for your classes through your Student Services Center. You can also search for courses and generate possible schedules using the left-hand side drop-down navigation to click **Enrollment**, then **Schedule Builder**.

### Add Courses

- a. Open the **Shopping Cart**.
- b. Select the course.
- c. Click **Enroll**.

### Drop Courses

- a. From the left-hand menu, click **Enrollment**, then **Drop Classes**. **Note:** Make sure you select the correct term.
- b. Select the checkboxes for the courses to be dropped, then click **Drop**.
- c. Confirm your drop decision and view the dropped course information.

### Edit Enrollment

Use **Edit Enrollment** to select different labs or recitations while keeping the same lecture

- a. From the left-hand menu, click **Enrollment**, then **Edit Enrollment**.
- b. Locate a course, then click **Edit**.
- c. Click **Continue**, then confirm your changes.

### Swap Courses

Use the swap function to add and drop a course at the same time. Consider using this function in situations involving course scheduling conflicts *or* in situations where adding a course exceeds the allowable credits for the term.

- a. From the left-hand menu, click **Enrollment**, then **Swap Classes**.
- b. Select a course you are enrolled in, then click **Swap this class** drop-down menu.

**Note 1:** You have several choices. Selecting **With Class from Search** takes you to the main course search where you can locate a section of a course that is not already in your Planner or Shopping Cart.

- c. Select a course, then confirm the swap.

4. If a class requires instructor consent, please email Enrollment Services- [upbacct@pitt.edu](mailto:upbacct@pitt.edu). Provide your name, the course you are seeking consent to add and the reason you need consent. Copy the instructor and your advisor so they may respond with their approval.
5. If a class is closed and you choose the **waitlist option** for the class, please note this does not guarantee you a seat in the class. You will be waiting for notification IF a seat opens, and you are enrolled in the course. Your total credits for the term only takes into account those courses for which you are actually enrolled. Waitlisted does not mean you are enrolled in the course.

**If you have any obligations to the University (financial or otherwise) and it results in a hold on your account, you will not be able to register until you have resolved the issue and the hold has been removed.**

**A STUDENT TAKING ENG 0100 NEEDS A GRADE OF C- OR BETTER BEFORE TAKING ENG 0101.**

**A STUDENT TAKING ENG 0101 NEEDS A GRADE OF C- OR BETTER BEFORE TAKING ENG 0102.**

**A STUDENT TAKING MATH 0097 NEEDS A GRADE OF C- OR BETTER BEFORE TAKING HIGHER LEVEL MATH COURSES.**

**STUDENTS MUST COMPLETE ENGLISH COMPOSITION I AND II, MATHEMATICS COMPETENCIES AND FRESHMAN SEMINAR WITH A GRADE OF C- OR BETTER PRIOR TO ENROLLING IN 1300-1400 LEVEL COURSES.**



## DESCRIPTIONS FOR SELECT SPRING 2025 COURSES

Descriptions for all other courses can be found at [catalog.upb.pitt.edu](http://catalog.upb.pitt.edu)

**ART 0109 (3) Mural Design:** Learn what it takes to produce impactful public art. This course, taught by a professional mural artist, follows step by step, the process of design, project management and installation of community art projects. Students from any major will benefit from the experience of idea development, collaborative painting execution, and sequential learning. Work will be done in the studio and on the mural site and explore contemporary approaches in mural painting. Students will also research murals from around the world to learn about their cultural and historical significance.

**BIOL 1448 (2) TOPICS IN BIOLOGY: Endocrinology:** This course is designed to provide a broad overview of human endocrinology. We will explore various classes of hormones, sources of hormones, production and synthesis of hormones, receptors and target tissues, mechanisms of action and regulation, and methods used in endocrinology. Special attention will be provided to endocrine disorders/diseases.

**BIOL 1450/ CHEM 1455/FORSCI 1450 (3): Forensic Toxicology:** This course will examine the practical and theoretical aspects of forensic toxicology. An emphasis will be on the study of select classes of drugs and their implications in a forensic setting. This course will utilize the background knowledge of the students from their previous biology and chemistry courses. At the completion of this course, the students will understand the pharmacokinetics and pharmacodynamics of licit and illicit drugs along with the analysis of the parent drug and metabolites in complex matrices. Besides the practical applications discussed during lecture, case studies and relevant current cases will be discussed in order to explore forensic toxicology in its context. This course will emphasize students' critical thinking and problem-solving skills not in abstract reasoning, but in the context within which students will likely practice their profession.

**CHEM 1437 (3): Topics in Inorganic Chemistry:** This course examines the effects of structure and bonding on chemical properties and the application of periodic relationship to selected families of elements. Topics include synthesis, stereochemistry, and spectroscopy of inorganic compounds.

**COMM 0250 (3) SPECIAL TOPICS: COMMUNICATION & SOCIAL CHANGE:** Communication & Social Change examines the of processes that underpin global inequalities and how varied communication approaches, and tools are designed and implemented to reduce such inequalities. This course examines current communication strategies used by social change agents in several different cultures to establish and maintain relationships with different communities. We will explore the influence of culture on communication in a development context and various approaches to viewing the role of culture on human progress. We will also discuss 'third world' development and international relations with regards to the role of media as a tool for directed social change. Students apply the knowledge they will acquire in resource management, social networking, traditional and new media, as well as problem-solving to complete a variety of applied assignments and undertake one community-based project for global social change. *GE: Cultures-Global*

**EM 1102 (4) EMERGENCY MEDICINE TECHNICIAN-Lecture and Lab:** This course provides learners with the cognitive knowledge and values to develop as an emergency medical professional at the basic life-support level. This course meets all minimum training requirements as established by the U.S. Department of Transportation in the EMT, National Education Standards. This course provides the learner with the opportunity to develop basic life-support psychomotor skills. Successful completion of this course makes the learner eligible to become certified by the National Registry of EMT's and the Pennsylvania Department of Health. There is an additional course fee of \$200 charged with this course. *\*When searching online for this course note that it is a Pittsburgh course. Permission must be requested as there are limited seats. Contact Enrollment Services [upbacct@pitt.edu](mailto:upbacct@pitt.edu). Please include your PS ID as part of your request.*

**FORSCI 0251 (1): Special Topics Forensic Science Lab: *This is a one credit lab that would need to be taken with the ADMJ 0230 Forensic Science lecture.*** This course examines forensic techniques commonly used in criminal investigations such as: crime scene reconstruction, hair, fiber, soil, inorganic and organic analysis, spectroscopy, microscopy, toxicology, fingerprints, firearms, and DNA. The description, scientific underpinnings, and limitations of forensic techniques are discussed. The course gives students a background in scientific tools available to investigate crime.

**IA 0101 (3) Arts Awareness:** So, here you are with some art. *What is it made of? What is it doing? What are you experiencing? How are you experiencing it?* Art is created and then "consumed" in a constellation of contexts. In this course we will be engaging with visual art, creative writing, music, and theatre – and work that deliberately blurs and/or crosses those disciplines. We will analyze some of the theory behind the different forms, through the study of key concepts, and we will dive into practice: through attendance at events happening on campus during the term, and through in-class creative projects. This hybrid class meets once per week, and requires attendance at some of the free arts events scheduled through the spring term.

**NUR 1450 (3): Topics in Nursing: Population Health:** The focus of this course is to explore the disparities and deficits that exist among subpopulations. Emphasis will be placed on barriers to healthcare accessibility, access to education, social services, financial/economic constraints, and stress and adaptation related to identified or perceived barriers affecting a diverse range of races, ethnicities, genders, physical differences, religious differences, sexual orientations, and groups sharing commonalities (e.g. homeless, veterans, children, etc.). As an interdisciplinary course, core values and underlying theories will be incorporated from other social science fields to examine the role, function, and effects deficits have on subpopulations.

**PHIL 1306 (3): Gender, Race, & the Environment:** This course explores contributions from feminists and marginalized others to the field of environmental ethics in an effort to understand and recraft the ethical relationship between humans and Earth Others.

**WRITNG 0208 (3): Writing About Nature, Place and Environmental Issues:** In Writing about Nature, Place, and Environmental issues, we'll work on poetry, essays, and memoir related to nature and place, journalism, cultural commentary, and critical pieces related to climate change, environmental ethics, and activism. We'll read a variety of professional models in order to explore aspects of craft, including Robin Wall Kimmerer's *Braiding Sweetgrass: Indigenous Wisdom, Scientific Knowledge, and the Teachings of Plants*. Students will have the opportunity to participate in nature walks and other exercises designed to engage with our surroundings as well as to meet and chat with Kimmerer when she visits campus for a talk in March.

## **GE SCIENCE COURSES DESIGNED SPECIFICALLY FOR THE NON-MAJOR**

The following courses are science courses that are specifically designed for students who are not majoring in a scientific field.

### **GE: LIFE SCIENCE COURSES:**

**BIOL 0091 (3) CONCEPTS OF BIOLOGY:** Designed for the non-major. A survey of biological concepts providing students with a good understanding of how biology relates to everyday life.

**BIOL 0108 (3) PLANTS & PEOPLE: INTRO TO ETHNOBOTANY:** The value of plants to society is introduced along with a discussion of the plants as part of the natural world. The course will examine the uses of plants by many cultures, past and present, for food, timber, fuel, clothing, religious activities and medicine, among other uses. A basic introduction to the anatomy and ecology of plants will also be covered.  
GE: Life Sci.-Global

**BIOL 0112 (3) HUMAN BIOLOGY:** Designed for the non-major. General principles of genetics, biochemistry, anatomy, and physiology are illustrated with reference to normal human body functions. Topics are structured to allow the student to better appreciate contemporary issues and controversies.

**BIOL 0118 (3) ECOLOGY AND ENVIRONMENTAL BIOLOGY:** Designed for the non-major. Basic principles of ecology are introduced along with a discussion of the complexity of environmental problems and their solutions.

**BIOL 0119 (1) ECOLOGY AND ENVIRONMENTAL BIOLOGY LAB:** Laboratory will include field trips to various habitats in our region and analyses of environmental parameters. Three hours of lab per week.

**GEOL 0108 (3) PALEOBIOLOGY/ GEOL 0118 (1) PALEOBIOLOGY LAB:** Paleobiology is the study of fossilized animals most of which are now extinct, and their relationships to one another and to their environment. It encompasses the identification (who is it?), taxonomic relationships (who is it related to?), evolutionary history (is it extinct or extant?), ecological relationships (who did it eat? Who was it eaten by?), geologic distribution (when did it live?), behavior (did it live in burrows?), and taphonomy (how did it get fossilized?) of these organisms. GE: Life or Physical Science

### **GE: PHYSICAL SCIENCE COURSES:**

**ASTRON 0101 (3) INTRODUCTION TO ASTRONOMY:** This introductory course in astronomy includes topics in light and the telescope, solar system, stars, nebulae, stellar evolution, quarks to quasars, galactic systems, and cosmology.

**CHEM 0187 (3) DRUGS AND SOCIETY LECTURE:** The course intended for non-science majors provides facts about drug sources, history, action in the body, side-effects, interactions; tolerance, abuse potential, dependency; drug delivery systems and alternatives will be covered. All major classes of drugs will be covered.

**CHEM 0188 (1) DRUGS AND SOCIETY LAB:** May be taken concurrently with CHEM 0187. Students will be introduced to instrumentation used by medical chemistry and forensic scientists and will be instructed in the synthesis of drugs (e.g., aspirin). A field trip to the New York state crime lab (Olean, NY) will be scheduled.

**ES 0105 (3) ENVIRONMENTAL GEOLOGY:** A study of cultural basis for environmental awareness; geologic hazards; environmental modification due to human impact; waste disposal; mineral resources and environment; energy and environment; landscape evaluation; air and water pollution.

**ES 0107 (1) ENVIRONMENTAL GEOLOGY LAB:** The course goal is to learn problem solving techniques involving geological processes which affect natural and human-caused environmental hazards.

**GEOL 0108 (3) PALEOBIOLOGY/ GEOL 0118 (1) PALEOBIOLOGY LAB:** Paleobiology is the study of fossilized animals most of which are now extinct, and their relationships to one another and to their environment. It encompasses the identification (who is it?), taxonomic relationships (who is it related to?), evolutionary history (is it extinct or extant?), ecological relationships (who did it eat? Who was it eaten by?), geologic distribution (when did it live?), behavior (did it live in burrows?), and taphonomy (how did it get fossilized?) of these organisms. GE: Life or Physical Science

**PHYS 0103 (3) CONCEPTS OF MODERN PHYSICS:** A basic examination of essential topics including mechanics, properties of matter, heat, sound, electricity and magnetism, light, atomic and nuclear physics, relativity, and astrophysics.

**GE: COMPUTATIONAL SCIENCES COURSE(S):**

**CIST 0150 (3) FUNDAMENTALS OF PROGRAMMING:** The course is designed to provide the student with an adequate understanding of programming concepts and principles to enable the student to design and implement programs for his or her own use or use in the classroom.

# Downhill Skiing & Snowboarding

The skiing/snowboarding classes will be held at Holiday Valley on Wednesday nights from 4:15 – 8:45 p.m. and meets for seven weeks starting Wednesday, January 8<sup>th</sup>. The class is for beginners as well as advanced skiers or snowboarders. This is a pass or fail course. **\*You need to attend and participate in all 7 weeks for the allocated time and take seven, 5:30 p.m. 1-hour lessons to receive credit for this course, attendance will be taken at the lesson and prior to departure. Late arrivals will not receive credit for that night! You need to be at the ski school line up ten minutes before the lesson departs.** If a student drops or withdrawals from ski/snowboarding class there is no refund for the lift ticket or rentals as these are Holiday Valley fees not university fees. We will depart from campus at 4:15 p.m., returning by 9:45 p.m., transportation is limited to students with no vehicle.

Holiday Valley ski resort is 35 minutes from campus, in Ellicottville, NY. The resort is located in the Lake Effect Western New York Snowbelt. Average snowfall is 180". There are 60-Day Trails, 41 Night Trails, 13 Lifts, and 4 Terrain Parks.

## **Cancelled classes due to weather/unsafe road conditions:**

You will be notified via campus e-mail by 2:00 p.m. if the weather is questionable letting you know if skiing/snowboarding class is cancelled. Check ski reports at [www.holidayvalley.com](http://www.holidayvalley.com)

**You will be required to purchase a Holiday Valley lift ticket and rentals if you do not own equipment.**

## **Holiday Valley Lift Ticket Prices:**

**Wednesday Night Pass for Credit	\$178.00 (includes 8 Lessons)		
*College Student Season Pass	\$339.00	All Season Ski/Snowboard Rental	\$132.00
*College Student Season Night Pass	\$239.00	All Season Helmet Rental	\$ 33.00

## **Equipment Prices:**

\*\* This rate is \$10.00 less if purchased before November 1<sup>st</sup>.

\* (these prices are only offered until Dec.1<sup>st</sup> and are for any college student enrolled in class. Rates increase \$50.00 after December 1<sup>st</sup>. You must use this link for discounts. [https://hv-hvnewyork.securecdn.na2.accessoticketing.com/embed/store.php?merchant\\_id=901183&emerchant\\_id=900901](https://hv-hvnewyork.securecdn.na2.accessoticketing.com/embed/store.php?merchant_id=901183&emerchant_id=900901)

Username: MWpittbrad

Password: ski123

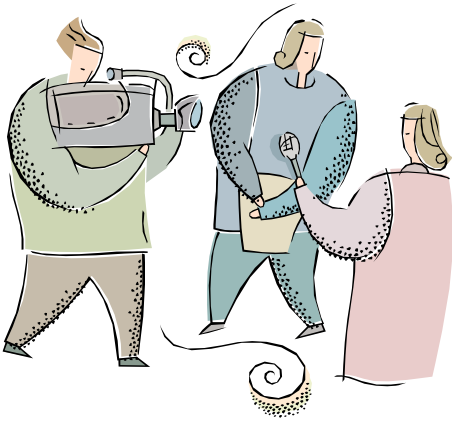


A mandatory meeting will be held on Monday, January 6<sup>th</sup>, at 4:15 p.m. in the University Room, Frame-Westerberg Commons building. Payment for your lift ticket and ski rentals will be required prior to the start of ski class, which can be done online at the above website.

**For additional questions, contact Leasa Maley at Panther Services at 2-5143, or via email at [maley@pitt.edu](mailto:maley@pitt.edu)**



# Academic Internships at Pitt-Bradford



Students seeking information regarding internship opportunities and guidance on the process may contact Angie Wolfe in Career Services [awolfe@pitt.edu](mailto:awolfe@pitt.edu)

An academic internship is a carefully planned and monitored work experience that meets specific learning goals related to an academic field of study. There should be a relationship between the practical experience gained in an internship and the academic work done in the classroom.

Internships allow students to acquire hands-on, practical experience and develop key competencies and critical skills in their chosen field of study.

Undergraduate students at Pitt-Bradford can earn between one and six credits for internships. No more than 6 credits of internship may be taken at any one time. A minimum of 45 on-site hours must be completed per credit hour earned.

Some students elect to participate in an internship experience and not receive academic credit.

**Approval of an academic internship application is contingent upon satisfaction of the following requirements:**

Junior standing

Good academic standing and meeting the requirements of the major

Completion of the Internship Proposal ([Internship Proposal Form](#))

Approval of the faculty intern supervisor, the student's academic advisor, the division chair and the vice president and dean of academic affairs.

# Undergraduate RESEARCH Opportunities!

All students in their sophomore year or beyond are encouraged to consider doing directed research in their major. Such courses prove valuable for pursuing special research interests, preparing for the job market and enhancing one's competitiveness for graduate school.

Funding is available to help underwrite the costs associated with undergraduate research, including conference travel.

A Summer Undergraduate Research Assistant program is also available, which includes on-campus housing and a stipend.



For more information, contact Dr. Warren Fass, Director of Undergraduate Research, at 362-7577 ([fass@pitt.edu](mailto:fass@pitt.edu)); the Office of Academic Affairs; or any member of the faculty.

CRN	SUBJ/ NUM	TITLE	TYPE	BLD/ROOM	DAYS	TIMES	INSTRUCTOR	CR	GE CATEGORY
<b>ACCT</b>									
19810	ACCT 0201	FINANCIAL ACCOUNTING CONCEPTS	REC	SWRTS00106	M W	11:00 AM-11:50 AM	Crawford J.	0	
19809	ACCT 0201	FINANCIAL ACCOUNTING CONCEPTS	LEC	SWRTS00104	M W F	10:00 AM-10:50 AM	Crawford J.	4	
13493	ACCT 0202	MANAGERIAL ACCOUNTING CONCEPTS	LEC	SWRTS00209	M W F	09:00 AM-09:50 AM	Crawford J.	3	
27972	ACCT 0202	MANAGERIAL ACCOUNTING CONCEPTS <i>Web course</i>	LEC	WEBTBA		-	Crawford J.	3	
23378	ACCT 1302	INTERMEDIATE ACCOUNTING 2	LEC	SWRTS00207	T R	11:00 AM-12:15 PM	Moonan M.	3	
13539	ACCT 1303	STRATEGIC COST MANAGEMENT	LEC	SWRTS00161	M W F	02:00 PM-02:50 PM	Crawford J.	3	
24210	ACCT 1305	AUDITING	LEC	EITB00210	M W F	11:00 AM-11:50 AM	Moonan M.	3	
13534	ACCT 1306	FEDERAL CORPORATE INCOME TAXES	LEC	SWRTS00207	T R	09:30 AM-10:45 AM	Moonan M.	3	
16347	ACCT 1401	ADVANCED ACCOUNTING	LEC	SWRTS00161	M W F	01:00 PM-01:50 PM	Moonan M.	3	
<b>ADMJ</b>									
21468	ADMJ 0205	POLIC & SOCTY:RACE,CRIME JUSTC	LEC	FISHR0106D	M W	09:30 AM-10:45 AM	Gaskew T.	3	GE:Behavioral Sciences
31857	ADMJ 0205	POLIC & SOCTY:RACE,CRIME JUSTC	LEC	FISHR0106D	M W	11:00 AM-12:15 PM	Gaskew T.	3	GE:Behavioral Sciences
31854	ADMJ 0206	CRIMINOLOGY <i>8 seats reserved for CJ majors and Administration of Justice minors. Cross listed with SOC 0206</i>	LEC	SWRTS00207	T R	02:30 PM-03:45 PM	Bish D.	3	GE:Behavioral Sciences
31873	ADMJ 0206	CRIMINOLOGY <i>Cross listed with SOC 0206</i>	LEC	SWRTS00108	T R	09:30 AM-10:45 AM	Bish D.	3	GE:Behavioral Sciences
31853	ADMJ 0215	LAW ENFORCEMENT OPERATIONS	LEC	SWRTS00108	M W	03:00 PM-04:15 PM	Ezeihuoma O.	3	
31852	ADMJ 0230	INTRO TO FORENSIC SCIENCE <i>12 seats reserved for Criminal Justice &amp; Forensic Science majors. Students must also register for FORSCI 0251</i>	LEC	FISHR0106D	M W	01:00 PM-02:15 PM	Gaskew T.	3	
			LEC	FISHR0106D	M W	01:00 PM-02:15 PM	Choo R.	3	
31855	ADMJ 1304	JUVENILE JUSTICE SYSTEM	LEC	SWRTS00111	M	06:00 PM-08:30 PM	Ezeihuoma O.	3	
26709	ADMJ 1321	LAW & SOCIAL CTRL IN SOCIETY	LEC	SWRTS00207	T R	04:00 PM-05:15 PM	Bish D.	3	
31851	ADMJ 1402	CONTEM ISSUES IN CORRECTIONS	LEC	SWRTS00108	M W	04:30 PM-05:45 PM	Ezeihuoma O.	3	
21418	ADMJ 1451	CAPSTONE: CRIMINAL JUSTICE <i>Instructor permission required</i>	SEM	SWRTS00110	M W F	11:00 AM-11:50 AM	Ezeihuoma O.	3	
<b>AFRCNA</b>									
24257	AFRCNA 0101	INTRO TO AFRICANA STUDIES	LEC	BLAIS00121	T R	09:30 AM-10:45 AM	Ogundayo B.	3	GE:Cultures-Global
<b>ANTH</b>									
29819	ANTH 0235	APPALACHIAN CULTURE	LEC	SWRTS00209	T R	11:00 AM-12:15 PM	Morgan J.	3	GE:Cultures
31859	ANTH 1307	POVERTY AND SOCIETY <i>Cross listed with ECON 1301</i>	LEC	EITB00211	T R	05:30 PM-06:45 PM	Palmer F.	3	GE:Behavioral Sciences
<b>ART</b>									
29583	ART 0101	DRAWING 1	LEC	BLAIS00146	M W	01:00 PM-02:30 PM	Wiley D.	3	GE:Arts
31773	ART 0103	DIGITAL GRAPHIC DESIGN 1	LEC	BLAIS00147	T R	10:00 AM-11:30 AM	Wiley D.	3	GE:Arts
31918	ART 0109	MURAL DESIGN <i>Meets in BLAIS 146 and onsite</i>	LEC	BLAIS00146	T R	02:30 PM-03:45 PM	Minard R.	3	GE:Arts
26760	ART 0112	PRINTMAKING	LEC	BLAIS00146	M	06:00 PM-08:30 PM	Minard R.	3	GE:Arts
26790	ART 0205	CERAMICS: WHEEL THROWING	LEC	CS00100	M W	10:00 AM-11:30 AM	Mormile A.	3	GE:Arts
31774	ART 1302	NEW GENRES	LEC	BLAIS00146	T R	01:00 PM-02:30 PM	Wiley D.	3	

CRN	SUBJ/ NUM	TITLE	TYPE	BLD/ROOM	DAYS	TIMES	INSTRUCTOR	CR	GE CATEGORY
<b>ART</b>									
31775	ART 1303	DIGITAL GRAPHIC DESIGN II	LEC	BLAIS00147	M W	10:00 AM-11:30 AM	Wiley D.	3	GE:Arts
<b>ASTRON</b>									
29691	ASTRON 0101	INTRODUCTION TO ASTRONOMY	LEC	FISHR00107	M W	06:00 PM-07:15 PM	Picklo B.	3	GE:Physical Science
<b>BIOL</b>									
27999	BIOL 0091	CONCEPTS OF BIOLOGY	LEC	SWRTS00111	M W F	01:00 PM-01:50 PM	Morenikeji O.	3	GE:Life Science
13827	BIOL 0101	INTRO TO CELL & MOLECULAR BIOL	LEC	SWRTS00111	M W F	09:00 AM-09:50 AM	Morenikeji O.	4	GE:Life Science
13828	BIOL 0101	INTRO TO CELL & MOLECULAR BIOL	LAB	FISHR0206E	T	09:00 AM-12:00 PM	Mulcahy M.	0	GE:Life Science
13829	BIOL 0101	INTRO TO CELL & MOLECULAR BIOL	LAB	FISHR0206E	T	01:00 PM-04:00 PM	Mulcahy M.	0	GE:Life Science
14088	BIOL 0102	INTRODUCTION TO BIODIVERSITY <i>All seats reserved for Biology major/minor, Pre-Hlth, Exsci, Env. Sci., Forsci, Biol Ed majors</i>	LEC	SWRTS00105	M W F	09:00 AM-09:50 AM	Sebastiani J.	4	GE:Life Science
31828	BIOL 0102	INTRODUCTION TO BIODIVERSITY	LEC	FISHR00111	M W F	11:00 AM-11:50 AM	Sebastiani J.	4	GE:Life Science
14089	BIOL 0102	INTRODUCTION TO BIODIVERSITY	LAB	FISHR0206E	R	01:00 PM-04:00 PM	Sebastiani J.	0	GE:Life Science
19804	BIOL 0102	INTRODUCTION TO BIODIVERSITY	LAB	FISHR0206E	R	09:00 AM-12:00 PM	Sebastiani J.	0	GE:Life Science
31846	BIOL 0108	PLNTS & PEOP: INTRO ETHNOBTNY	LEC	FISHR00111	M W F	10:00 AM-10:50 AM	Mulcahy M.	3	GE:Life Sci-Global
24221	BIOL 0112	HUMAN BIOLOGY	LEC	EITB00222	R	06:00 PM-08:30 PM	James O.	3	GE:Life Science
26714	BIOL 0118	ECOLOGY AND ENVIRONMENTAL BIOL	LEC	SWRTS00108	M W F	11:00 AM-11:50 AM	Femi-Oloye O.	3	GE:Life Science
22288	BIOL 0119	ECOLOGY & ENVIRON BIOL LAB	CLB	FISHR0106A	W	03:00 PM-06:00 PM	Mulcahy M.	1	GE:Life Science
13477	BIOL 0202	MICROBIOL FOR ALLD HEALTH PROF <i>12 seats reserved for ASN. Hybrid course.</i>	LEC	FISHR0105D	M	01:00 PM-03:00 PM	Yaich L.	4	
13538	BIOL 0202	MICROBIOL FOR ALLD HEALTH PROF <i>Reserved for ASN majors</i>	LAB	FISHR0205E	M	03:00 PM-06:00 PM	Yaich L.	0	
31830	BIOL 0204	GENETICS <i>4 seats reserved for seniors</i>	LEC	FISHR00111	M W F	09:00 AM-09:50 AM	Yaich L.	3	
31832	BIOL 0205	GENETICS LAB	CLB	FISHR0206A	R	08:30 AM-12:30 PM	Yaich L.	1	
31833	BIOL 0205	GENETICS LAB	CLB	FISHR0206A	R	01:00 PM-05:00 PM	Yaich L.	1	
13532	BIOL 0212	HUMAN ANATOMY AND PHYSIOLOGY 1	LEC	FISHR00207	M W F	02:00 PM-02:50 PM	Merwine D.	3	GE:Life Science
13479	BIOL 0213	HUMAN ANATOMY AND PHYSIOLOGY 2 <i>40 seats reserved for Nursing, PreNursing and PreRadSci majors</i>	LEC	FISHR00107	M W F	04:00 PM-04:50 PM	Graham D.	3	GE:Life Science
13999	BIOL 0213	HUMAN ANATOMY AND PHYSIOLOGY 2 <i>40 seats reserved for Ex Sci and PreHlth majors</i>	LEC	FISHR00107	M W F	12:00 PM-12:50 PM	Graham D.	3	GE:Life Science
31834	BIOL 0218	PRINCIPLES OF ECOLOGY AND EVOL	LEC	SWRTS00104	M W F	01:00 PM-01:50 PM	Femi-Oloye O.	3	
31835	BIOL 0219	PRINCIPLES ECOLOGY & EVOL LAB	CLB	FISHR0106A	T	08:30 AM-12:30 PM	Femi-Oloye O.	1	
			CLB	SWRTS00106	T	10:30 AM-11:30 AM		1	
20554	BIOL 0222	HUMAN ANAT & PHYSIOLOGY LAB 1	CLB	FISHR0205A	M	03:00 PM-06:00 PM	James O.	1	
20555	BIOL 0222	HUMAN ANAT & PHYSIOLOGY LAB 1	CLB	FISHR0205A	M	06:00 PM-09:00 PM	James O.	1	
20578	BIOL 0223	HUMAN ANAT & PHYSIOLOGY LAB 2	CLB	FISHR0205A	T	06:00 PM-09:00 PM	James O.	1	
20579	BIOL 0223	HUMAN ANAT & PHYSIOLOGY LAB 2	CLB	FISHR0205A	R	09:00 AM-12:00 PM	James O.	1	
20580	BIOL 0223	HUMAN ANAT & PHYSIOLOGY LAB 2	CLB	FISHR0205A	T	01:00 PM-04:00 PM	James O.	1	
29543	BIOL 0223	HUMAN ANAT & PHYSIOLOGY LAB 2	CLB	FISHR0205A	R	01:00 PM-04:00 PM	James O.	1	

CRN	SUBJ/ NUM	TITLE	TYPE	BLD/ROOM	DAYS	TIMES	INSTRUCTOR	CR	GE CATEGORY
<b>BIOL</b>									
31837	BIOL 1301	ANIMAL BEHAVIOR	LEC	FISHR00207	M W F	10:00 AM-10:50 AM	Merwine D.	3	
31838	BIOL 1302	MICROBIOLOGY	LEC	SWRTS00104	M W F	09:00 AM-09:50 AM	Femi-Oloye O.	4	
31839	BIOL 1302	MICROBIOLOGY	LAB	FISHR0205E	R	08:30 AM-12:30 PM	Femi-Oloye O.	0	
31840	BIOL 1316	BIOMEDICAL ENGINEERING	LEC	FISHR00111	F	12:00 PM-12:50 PM	Merwine D.	1	
31841	BIOL 1405	POPULATION & CONSERVATION BIOL	LEC	FISHR0106A	M W F	01:00 PM-01:50 PM	Sebastiani J.	4	
			LEC	FISHR0106A	M W F	01:00 PM-01:50 PM	Mulcahy M.	4	
31842	BIOL 1405	POPULATION & CONSERVATION BIOL	LAB	SWRTS00106	R	08:30 AM-10:00 AM	Mulcahy M.	0	
			LAB	FISHR0106A	R	08:30 AM-12:30 PM		0	
31843	BIOL 1409	GENOMICS & BIOINFORMATINCS LAB	CLB	SWRTS00106	M W	04:30 PM-05:45 PM	Morenikeji O.	1	
31844	BIOL 1410	GENOMICS AND BIOINFORMATICS	LEC	SWRTS00106	M W	03:00 PM-04:15 PM	Morenikeji O.	3	
31836	BIOL 1440	CANCER BIOLOGY	LEC	FISHR00208	M W F	11:00 AM-11:50 AM	Morenikeji O.	3	
31845	BIOL 1448	TOPICS IN BIOLOGY 2CR LEC ENDOCRINOLOGY	LEC	FISHR00111	T	09:00 AM-10:45 AM	James O.	2	
29837	BIOL 1450	TOPICS IN BIOLOGY FORENSIC TOXICOLOGY Cross listed with FORSCI 1450 and CHEM 1455	LEC	FISHR0106D	M W	03:00 PM-04:15 PM	Choo R.	3	
24531	BIOL 1451	CAPSTONE: BIOLOGY	SEM	FISHR0105D	M W	12:00 PM-12:50 PM	Choo R.	2	
26761	BIOL 1451	CAPSTONE: BIOLOGY	SEM	FISHR0206E	M W	12:00 PM-12:50 PM	Mulcahy M.	2	
29572	BIOL 1451	CAPSTONE: BIOLOGY	SEM	SWRTS00105	M W	12:00 PM-12:50 PM	Sebastiani J.	2	
29864	BIOL 1451	CAPSTONE: BIOLOGY	SEM	FISHR00111	M W	12:00 PM-12:50 PM	Yaich L.	2	
<b>CHEM</b>									
13544	CHEM 0101	GENERAL CHEMISTRY 1	LEC	FISHR00107	M W F	02:00 PM-02:50 PM	Kandel S.	4	GE:Physical Science
19954	CHEM 0101	GENERAL CHEMISTRY 1	LAB	FISHR0212E	T	01:00 PM-05:00 PM	Kandel S.	0	GE:Physical Science
22398	CHEM 0101	GENERAL CHEMISTRY 1	LAB	FISHR0212E	R	01:00 PM-05:00 PM	Kandel S.	0	GE:Physical Science
25754	CHEM 0101	GENERAL CHEMISTRY 1	LAB	FISHR0212E	T	05:30 PM-09:30 PM	Kandel S.	0	GE:Physical Science
31808	CHEM 0101	GENERAL CHEMISTRY 1	LAB	FISHR0212E	T	08:30 AM-12:30 PM	Odorisio M.	0	GE:Physical Science
13480	CHEM 0102	GENERAL CHEMISTRY 2	LEC	SWRTS00111	M W F	02:00 PM-02:50 PM	Myers R.	4	GE:Physical Science
13481	CHEM 0102	GENERAL CHEMISTRY 2	LEC	SWRTS00111	M W F	03:00 PM-03:50 PM	Myers R.	4	GE:Physical Science
13482	CHEM 0102	GENERAL CHEMISTRY 2	LAB	FISHR0212A	R	08:30 AM-12:30 PM	Krenzel W.	0	GE:Physical Science
13483	CHEM 0102	GENERAL CHEMISTRY 2	LAB	FISHR0212A	R	05:30 PM-09:30 PM	Krenzel W.	0	GE:Physical Science
14000	CHEM 0102	GENERAL CHEMISTRY 2	LAB	FISHR0212A	T	08:30 AM-12:30 PM	Krenzel W.	0	GE:Physical Science
32328	CHEM 0102	GENERAL CHEMISTRY 2	LAB	FISHR0212A	R	01:00 PM-05:00 PM	Oloye F.	0	GE:Physical Science
15197	CHEM 0187	DRUGS AND SOCIETY Web course	LEC	WEBTBA		12:00 AM-12:00 AM	Soriano D.	3	GE:Physical Science
15999	CHEM 0187	DRUGS AND SOCIETY	LEC	FISHR00111	T	06:00 PM-08:30 PM	Soriano D.	3	GE:Physical Science
21413	CHEM 0188	DRUGS AND SOCIETY LAB	CLB	SWRTS00106	W	06:00 PM-09:30 PM	Soriano D.	1	GE:Physical Science
			CLB	FISHR0211A	W	05:30 PM-09:30 PM		1	

CRN	SUBJ/ NUM	TITLE	TYPE	BLD/ROOM	DAYS	TIMES	INSTRUCTOR	CR	GE CATEGORY
<b>CHEM</b>									
19258	CHEM 0206	ORGANIC CHEMISTRY 1	LEC	FISHR00208	M W	06:00 PM-07:15 PM	Oloye F.	3	GE:Physical Science
23327	CHEM 0207	ORGANIC CHEMISTRY 1 LAB	CLB	FISHR0211E	R	08:30 AM-12:30 PM	Odorisio M.	1	GE:Physical Science
13485	CHEM 0208	ORGANIC CHEMISTRY 2	LEC	FISHR00208	T R	06:00 PM-07:15 PM	Oloye F.	3	GE:Physical Science
13486	CHEM 0209	ORGANIC CHEMISTRY 2 LAB	CLB	SWRTS00106	T	01:00 PM-04:00 PM	Odorisio M.	1	GE:Physical Science
			CLB	FISHR0211E	T	01:00 PM-05:00 PM	Odorisio M.	1	GE:Physical Science
21445	CHEM 0209	ORGANIC CHEMISTRY 2 LAB	CLB	EITB00220	R	02:30 PM-05:00 PM	Odorisio M.	1	GE:Physical Science
			CLB	FISHR0211E	R	01:00 PM-05:00 PM		1	
14001	CHEM 1302	PHYSICAL CHEMISTRY 2	LEC	FISHR0105D	M W	03:00 PM-04:15 PM	Oloye F.	4	
14002	CHEM 1302	PHYSICAL CHEMISTRY 2	LAB	FISHR0211A	T	08:30 AM-12:30 PM	Oloye F.	0	
14437	CHEM 1305	ANALYTICAL INSTRUMENTATION	LEC	FISHR0105D	M W F	09:00 AM-09:50 AM	Myers R.	4	
14438	CHEM 1305	ANALYTICAL INSTRUMENTATION	LAB	FISHR0211A	R	08:30 AM-12:30 PM	Myers R.	0	
31812	CHEM 1437	TOPICS IN INORGANIC CHEMISTRY	LEC	FISHR00208	M W	04:30 PM-05:45 PM	Kandel S.	3	
14003	CHEM 1451	CAPSTONE: CHEMISTRY	SEM	EITB00210	M W	12:00 PM-12:50 PM	Myers R.	2	
29997	CHEM 1455	TOPICS IN CHEMISTRY <i>FORENSIC TOXICOLOGY Cross listed with FORSCI 1450 and BIOL 1450</i>	LEC	FISHR0106D	M W	03:00 PM-04:15 PM	Choo R.	3	
<b>CIST</b>									
20575	CIST 0150	FUNDAMENTALS OF PROGRAMMING	LEC	EITB00212	M W	01:00 PM-02:15 PM	Shaik S.	3	GE:Computational Sciences
20576	CIST 0150	FUNDAMENTALS OF PROGRAMMING	LEC	EITB00212	M W	02:30 PM-03:45 PM	Shaik S.	3	GE:Computational Sciences
14207	CIST 0166	NETWORKING 2	LEC	EITB00212	T R	02:30 PM-03:45 PM	Wang Y.	3	
24561	CIST 0261	COMPUTER SECURITY	LEC	EITB00212	T R	01:00 PM-02:15 PM	Ellison S.	3	
14435	CIST 0265	OBJECT ORIENTED PROGRAMMING	LEC	EITB00113	T	06:00 PM-08:30 PM	Callinan J.	3	
14434	CIST 1307	DATABASE DESIGN & MANAGEMENT	LEC	EITB00212	M W	11:00 AM-12:15 PM	Ellison R.	3	
24595	CIST 1310	SYSTEMS ANALYSIS AND DESIGN <i>Hybrid course</i>	LEC	EITB00213	T	01:00 PM-02:15 PM	Wang Y.	3	
31883	CIST 1311	ELECTRONIC COMMERCE	LEC	EITB00212	W	06:00 PM-08:30 PM	Wang Y.	3	
29646	CIST 1327	INTRUSN DETCTN & INCDNT RESPON	LEC	EITB00213	M	06:00 PM-08:30 PM	Kramer J.	3	
26751	CIST 1341	LINUX OPERATING SYSTEM	LEC	EITB00213	M W	01:00 PM-02:15 PM	Ellison S.	3	
22172	CIST 1342	HOST SCRIPTING	LEC	EITB00113	T R	11:00 AM-12:15 PM	Ellison R.	3	
31863	CIST 1415	DATA ANALYTICS	LEC	EITB00213	T	04:00 PM-06:30 PM	Shaik S.	3	
22173	CIST 1421	MOBILE APPLICATN PROGRAMMING	LEC	EITB00213	R	06:00 PM-08:30 PM	Callinan J.	3	
15196	CIST 1451	CAPSTONE: CIS&T <i>Hybrid course</i>	SEM	EITB00213	R	01:00 PM-02:15 PM	Wang Y.	3	
<b>CLP</b>									
31776	CLP 0216	MODERN AFRICAN LIT: THE NOVEL	LEC	SWRTS00107	M W	03:00 PM-04:15 PM	Ogundayo B.	3	GE:Literature-Global
29584	CLP 0230	MIDDLE EASTERN LITS & CULTURES	LEC	SWRTS00107	T R	02:30 PM-03:45 PM	Ogundayo B.	3	GE:Literature-Global
31777	CLP 1315	CRITICAL METHODS	LEC	SWRTS00104	M W	11:00 AM-12:15 PM	Ulin D.	3	GE:Literature



CRN	SUBJ/ NUM	TITLE	TYPE	BLD/ROOM	DAYS	TIMES	INSTRUCTOR	CR	GE CATEGORY
<b>COMM</b>									
13508	COMM 0104	PUBLIC SPEAKING	LEC	BLAIS00121	T R	02:30 PM-03:45 PM	Young B.	3	GE:Arts
29585	COMM 0104	PUBLIC SPEAKING	LEC	SWRTS00105M	W	03:00 PM-04:15 PM	Amevor E.	3	GE:Arts
16706	COMM 0115	INTERPERSONAL COMMUNICATION	LEC	BLAIS00138	R	06:00 PM-08:30 PM	Young B.	3	GE:Behavioral Sciences
29586	COMM 0201	MASS MEDIA AND SOCIETY	LEC	WEBTBA	T R	04:00 PM-05:15 PM	Brown M.	3	GE:Behavioral Sciences
		<i>Meets online synchronously, days/times listed</i>							
20538	COMM 0215	BOLLYWOOD: POPULAR INDIAN CINE	LEC	BLAIS00138	M W F	02:00 PM-02:50 PM	Gajanan R.	3	GE:Cultures-Global
31778	COMM 1308	ORGANIZATIONAL COMMUNICATION	LEC	SWRTS00108M		06:00 PM-08:30 PM	Amevor E.	3	
31780	COMM 1310	HUMAN COMMUNICATION THEORY	LEC	BLAIS00121	M W	03:00 PM-04:15 PM	Young B.	3	
31779	COMM 1401	BROADCAST PROGRAMMING AND MGT	LEC	WEBTBA	T R	02:30 PM-03:45 PM	Brown M.	3	
		<i>Meets online synchronously, days/time listed</i>							
<b>ECON</b>									
18971	ECON 0102	INTRODUCTION TO MICROECONOMICS	LEC	EITB00210	T R	02:30 PM-03:45 PM	Tiku E.	3	GE:Economics
18972	ECON 0102	INTRODUCTION TO MICROECONOMICS	LEC	EITB00210	T R	04:00 PM-05:15 PM	Tiku E.	3	GE:Economics
18970	ECON 0103	INTRODUCTION TO MACROECONOMICS	LEC	EITB00210	M W	04:30 PM-05:45 PM	Tiku E.	3	GE:Economics
29647	ECON 0103	INTRODUCTION TO MACROECONOMICS	LEC	EITB00210	M W	03:00 PM-04:15 PM	Tiku E.	3	GE:Economics
18973	ECON 0206	INTERMEDIATE MICROECONOMICS	LEC	SWRTS00105	T R	06:00 PM-07:15 PM	Gajanan S.	3	
		<i>Hybrid course</i>							
29648	ECON 1301	POVERTY AND SOCIETY	LEC	EITB00211	T R	05:30 PM-06:45 PM	Palmer F.	3	GE:Economics
		<i>8 seats reserved for Nursing &amp; 5 for Int. Affairs. Cross listed with ANTH 1307</i>							
31789	ECON 1307	ECONMCS OF ENERGY & ENVIRONMNT	LEC	SWRTS00105	T R	04:00 PM-05:15 PM	Gajanan S.	3	
<b>EDUC</b>									
26792	EDUC 0230	FAMILY & COMMUNITY RELTNSHPS	LEC	SWRTS00110M		06:00 PM-08:30 PM	Schwab A.	3	
20560	EDUC 0235	INSTRUCTIONAL DESIGN	LEC	SWRTS00110	T R	01:00 PM-02:15 PM	Lanzon P.	3	
25243	EDUC 0255	READINGS IN CHILDREN'S LITERTR	LEC	SWRTS00110M	W	03:00 PM-04:15 PM	Frank M.	3	GE:Second Lit.
25244	EDUC 0275	ADOLESCENT LITERATURE	LEC	SWRTS00161M	W	03:00 PM-04:15 PM	Clark W.	3	GE:Second Lit.
22171	EDUC 1301	INSTRUCTIONAL TECHNOLOGY	LEC	SWRTS00106M		06:00 PM-08:30 PM	Macer G.	3	
20561	EDUC 1306	CLASSROOM MANAGEMENT	LEC	SWRTS00161M	W	04:30 PM-05:45 PM	Clark W.	3	
21406	EDUC 1309	DIFFN READING INSTC & INTRV	LEC	SWRTS00110	T R	04:00 PM-05:15 PM	Lanzon P.	3	
18969	EDUC 1312	LANG DVLP & ERLY LITRCY FNDTNS	LEC	SWRTS00110	R	06:00 PM-08:30 PM	Lanzon P.	3	
18967	EDUC 1318	EARLY MATH FOUNDATIONS	LEC	SWRTS00110	W	06:00 PM-08:30 PM	Russell J.	3	
18968	EDUC 1320	ART, MUSIC, & MOVEMENT METHODS	LEC	SWRTS00110	T	06:00 PM-08:30 PM	Russell J.	3	
24490	EDUC 1325	DEVELOPMENT OF CHILDREN	LEC	SWRTS00161	T R	02:30 PM-03:45 PM	Chitiyo J.	3	
		<i>Hybrid course</i>							
15989	EDUC 1330	EDUCATING CHILDREN	LEC	SWRTS00161	T R	01:00 PM-02:15 PM	Chitiyo J.	3	
		<i>Hybrid course</i>							
20005	EDUC 1334	LITRCIES ACROSS MIDL/SEC CURR	LEC	SWRTS00161	T R	09:30 AM-10:45 AM	Clark W.	3	
27974	EDUC 1345	EDUCATIONAL THEORIES PRACTICES	LEC	SWRTS00110	T R	09:30 AM-10:45 AM	Lanzon P.	3	
14075	EDUC 1481	STUDENT TEACHING	PRA	SWRTS00101	W	04:00 PM-06:30 PM	Chitiyo J.	12	
		<i>Hybrid course</i>							

CRN	SUBJ/ NUM	TITLE	TYPE	BLD/ROOM	DAYS	TIMES	INSTRUCTOR	CR	GE CATEGORY
-----	-----------	-------	------	----------	------	-------	------------	----	-------------

### EM

26807	EM 1102	EMERGENCY MEDICINE TECHNICIAN	LEC	FISHR00110	T R	06:00 PM-09:00 PM	Platt T.	4	
		<i>Bradford campus section. Email upbacct@pitt.edu to register. This class has an additional fee.</i>							
			LEC	FISHR00110	T R	06:00 PM-09:00 PM	Graham D.	4	
26809	EM 1102	EMERGENCY MEDICINE TECHNICIAN	LAB	FISHR00110	R	01:00 PM-04:00 PM	Platt T.	0	
		<i>Bradford campus section. Email upbacct@pitt.edu to register. This class has an additional fee.</i>							
			LAB	FISHR00110	R	01:00 PM-04:00 PM	Graham D.	0	
26910	EM 1102	EMERGENCY MEDICINE TECHNICIAN	LAB	FISHR00110	T	01:00 PM-04:00 PM	Graham D.	0	
		<i>Bradford campus section. Email upbacct@pitt.edu to register. This class has an additional fee.</i>							
			LAB	FISHR00110	T	01:00 PM-04:00 PM	Platt T.	0	

### ENG

20539	ENG 0100	INTRO TO COLLEGE COMPOSITION	LEC	SWRTS00108M	W F	09:00 AM-09:50 AM	Slagle T.	3	
27981	ENG 0100	INTRO TO COLLEGE COMPOSITION	LEC	SWRTS00108M	W F	10:00 AM-10:50 AM	Slagle T.	3	
13510	ENG 0101	ENGLISH COMPOSITION 1	LEC	SWRTS00237	T R	02:30 PM-03:45 PM	Salvia M.	3	
13536	ENG 0101	ENGLISH COMPOSITION 1	LEC	SWRTS00110M	W F	01:00 PM-01:50 PM	Slagle T.	3	
14872	ENG 0101	ENGLISH COMPOSITION 1	LEC	SWRTS00110M	W F	02:00 PM-02:50 PM	Slagle T.	3	
19819	ENG 0101	ENGLISH COMPOSITION 1	LEC	SWRTS00107M	W F	12:00 PM-12:50 PM	Tessmer G.	3	
23399	ENG 0101	ENGLISH COMPOSITION 1	LEC	SWRTS00107M	W F	09:00 AM-09:50 AM	Tessmer G.	3	
25217	ENG 0101	ENGLISH COMPOSITION 1	LEC	SWRTS00207	T R	01:00 PM-02:15 PM	Salvia M.	3	
27982	ENG 0101	ENGLISH COMPOSITION 1	LEC	BLAIS00121	T R	11:00 AM-12:15 PM	Rogus M.	3	
28032	ENG 0101	ENGLISH COMPOSITION 1	LEC	BLAIS00138	T R	09:30 AM-10:45 AM	Rogus M.	3	
13509	ENG 0102	ENGLISH COMPOSITION 2	LEC	SWRTS00107	T R	01:00 PM-02:15 PM	Howell T.	3	
13511	ENG 0102	ENGLISH COMPOSITION 2	LEC	SWRTS00237	T R	04:00 PM-05:15 PM	Salvia M.	3	
13533	ENG 0102	ENGLISH COMPOSITION 2	LEC	FISHR00208	T R	09:30 AM-10:45 AM	Salvia M.	3	
24205	ENG 0102	ENGLISH COMPOSITION 2	LEC	BLAIS00138	M W	03:00 PM-04:15 PM	Kula C.	3	
31781	ENG 0102	ENGLISH COMPOSITION 2	LEC	SWRTS00107M	W F	02:00 PM-02:50 PM	Tessmer G.	3	
30016	ENG 0105	MASTERPIECES OF WORLD LITRATUR	LEC	BLAIS00121	T R	01:00 PM-02:15 PM	Jensen M.	3	GE:Literature
26791	ENG 0106	INTRODUCTION TO SHORT STORY	LEC	SWRTS00105M	W	04:30 PM-05:45 PM	Kula C.	3	GE:Literature
23400	ENG 0110	LITERATURE AND INTERPRETATION	LEC	SWRTS00107	T R	09:30 AM-10:45 AM	Tessmer G.	3	GE:Literature
31782	ENG 0213	AFRICANA WRITERS ON NATURE	LEC	SWRTS00104M	W	03:00 PM-04:15 PM	Ulin D.	3	GE:Literature-Global
31783	ENG 1308	20TH-CENTURY AMERICAN LIT	LEC	SWRTS00108	T R	04:00 PM-05:15 PM	Howell T.	3	GE:Literature

### ENGR

20595	ENGR 0016	INTRO TO ENGINEERING COMPUTING	LEC	EITB00220	T R	01:00 PM-02:15 PM	Liu G.	3	
30710	ENGR 0016	INTRO TO ENGINEERING COMPUTING	LEC	EITB00220	T R	08:00 AM-09:15 AM	Liu G.	3	
16000	ENGR 0022	MATERLS STRUCTURE & PROPERTIES	LEC	EITB00222	T R	09:30 AM-10:45 AM	Ranjan V.	3	
13494	ENGR 0082	FIRST-YEAR ENGR SEMINAR 2	SEM	EITB00222	T	02:30 PM-03:15 PM	Anderson G.	0	
13495	ENGR 0085	ENGINEERING SEMINAR	SEM	EITB00222	T	02:30 PM-03:15 PM	Anderson G.	0	

CRN	SUBJ/ NUM	TITLE	TYPE	BLD/ROOM	DAYS	TIMES	INSTRUCTOR	CR	GE CATEGORY
<b>ENGR</b>									
31814	ENGR 0141	MECHC OF MATLS CVL & ENV ENGRS <i>Cross listed with ENGR 0145</i>	LEC	EITB00221	T R	04:00 PM-05:15 PM	Liu G.	3	
31815	ENGR 0145	STATICS & MECHC OF MATERIALS 2 <i>Cross listed with ENGR 0141</i>	LEC	EITB00221	T R	04:00 PM-05:15 PM	Liu G.	3	
<b>ENVSTD</b>									
29671	ENVSTD 1451	CAPSTONE: ENVIRNMNTL STUDIES	LEC	SWRTS00237M		06:00 PM-08:30 PM	Morgan J.	3	
<b>ES</b>									
21419	ES 0105	ENVIRONMENTAL GEOLOGY	LEC	FISHR0112A	T R	09:30 AM-10:45 AM	Fratescu O.	3	GE:Physical Science
21420	ES 0107	ENVIRONMENTAL GEOLOGY LAB	CLB	FISHR0112A	R	02:30 PM-05:30 PM	Fratescu O.	1	GE:Physical Science
31816	ES 1301	ADV FIELD METHS AND TECHNIQUES	LEC	FISHR0211E	M	06:00 PM-08:30 PM	Odorisio M.	3	
<b>ET</b>									
28557	ET 0115	MECHANICS-STATICS	LEC	EITB00210	M W F	09:00 AM-09:50 AM	Liu G.	3	
28058	ET 0201	MECHANICS-DYNAMICS	LEC	EITB00210	M W F	10:00 AM-10:50 AM	Liu G.	3	
30617	ET 1300	ENGINEERING ECONOMICS	LEC	EITB00220	T R	09:30 AM-10:45 AM	Anderson G.	3	
<b>EXSCI</b>									
25209	EXSCI 0108	NUTRITION	LEC	SFCTR00159	M W F	01:00 PM-01:50 PM	Stark Z.	3	
25210	EXSCI 0108	NUTRITION	LEC	SFCTR00159	M W F	02:00 PM-02:50 PM	Stark Z.	3	
25211	EXSCI 0109	MEDICAL TERMINOLOGY <i>Web course</i>	LEC	WEBTBA		-	Preston C.	2	
32137	EXSCI 0201	EXERCISE IS MEDICINE	LEC	SFCTR00159	M W	12:00 PM-12:50 PM	Stark Z.	2	
			LEC	SFCTR00159	M W	12:00 PM-12:50 PM	Preston C.	2	
31848	EXSCI 0204	FIRST AID/CPR	CLB	SFCTR00159	M W	10:00 AM-10:50 AM	Stark Z.	2	
29578	EXSCI 0215	EXERCISE PSYCHOLOGY	LEC	SFCTR00159	T R	01:00 PM-02:15 PM	Preston C.	3	
28424	EXSCI 0225	FUNCTIONAL HUMAN ANATOMY <i>All sections for EXSCI majors, minors and Health &amp; PE</i>	LEC	SFCTR00126	M W F	01:00 PM-01:50 PM	Kelley M.	3	
31847	EXSCI 0225	FUNCTIONAL HUMAN ANATOMY <i>All sections for EXSCI majors, minors and Health &amp; PE</i>	LEC	SFCTR00126	M W F	10:00 AM-10:50 AM	Kelley M.	3	
25212	EXSCI 1305	BIOMECHANICS <i>All seats reserved ExSci &amp; Health &amp; PE</i>	LEC	SFCTR00159	M W F	09:00 AM-09:50 AM	Kelley M.	3	
25214	EXSCI 1320	PRIN STRENGTH TRAINING/CONDITNG	LEC	SFCTR00126	M W F	09:00 AM-09:50 AM	Stark Z.	3	
29579	EXSCI 1416	CLINICAL EXERCISE PHYSIOLOGY	LEC	BLAIS00121	M W F	10:00 AM-10:50 AM	Preston C.	3	
28050	EXSCI 1430	WORKSITE HEALTH PROMOTION	LEC	SFCTR00158	M W F	11:00 AM-11:50 AM	Kelley M.	3	
25215	EXSCI 1453	CAPSTONE: EXERCISE SCIENCE	LEC	SFCTR00158	T R	08:00 AM-09:15 AM	Kelley M.	3	
			LEC	SFCTR00158	T R	08:00 AM-09:15 AM	Preston C.	3	
31849	EXSCI 1453	CAPSTONE: EXERCISE SCIENCE	LEC	SFCTR00158	T R	09:30 AM-10:45 AM	Preston C.	3	
			LEC	SFCTR00158	T R	09:30 AM-10:45 AM	Kelley M.	3	
<b>FIN</b>									
29859	FIN 1301	CORPORATE FINANCE	LEC	SWRTS00162M	W F	03:00 PM-03:50 PM	Maxson A.	3	
25435	FIN 1303	ANLYSIS OF FINANCL STATEMENTS	LEC	SWRTS00237M	W F	09:00 AM-09:50 AM	Maxson A.	3	

CRN	SUBJ/ NUM	TITLE	TYPE	BLD/ROOM	DAYS	TIMES	INSTRUCTOR	CR	GE CATEGORY
<b>FIN</b>									
25246	FIN 1304	FINANCL MARKETS & INSTITUTIONS	LEC	SWRTS00237M	W F	10:00 AM-10:50 AM	Maxson A.	3	
<b>FORSCI</b>									
31818	FORSCI 0201	INTRO TO EVIDENCE ANALYSIS	LEC	FISHR0106D	W	06:00 PM-08:30 PM	Choo R.	3	
31819	FORSCI 0251	SPECIAL TOPICS FORSCI LAB	CLB	FISHR0105A	T	01:00 PM-04:00 PM	Choo R.	1	GE:Life or Physical Sci
		<i>12 seats reserved for Criminal Justice &amp; Forensic Science majors. Students must also register for ADMJ 0230</i>	CLB	FISHR0105A	T	01:00 PM-04:00 PM	Gaskew T.	1	
26708	FORSCI 1401	EVID COLLECTION & ANALYSIS II	LEC	FISHR0106D	M W	04:30 PM-05:45 PM	Choo R.	4	
26717	FORSCI 1401	EVID COLLECTION & ANALYSIS II	LAB	FISHR0105A	T	08:00 AM-12:00 PM	Choo R.	0	
			LAB	FISHR0106D	T	08:00 AM-12:00 PM		0	
29836	FORSCI 1450	TOPICS IN FORENSIC SCIENCE	LEC	FISHR0106D	M W	03:00 PM-04:15 PM	Choo R.	3	
		<i>FORENSIC TOXICOLOGY Cross listed with BIOL 1450 and CHEM 1455</i>							
<b>FR</b>									
31784	FR 0101	ELEMENTARY FRENCH 1	LEC	SWRTS00101M	W F	09:00 AM-09:50 AM	Ogundayo B.	3	GE:Language/Global
29595	FR 0102	ELEMENTARY FRENCH 2	LEC	SWRTS00101M	W F	09:00 AM-09:50 AM	Ogundayo B.	3	GE:Language/Global
<b>FS</b>									
28019	FS 0104	FIRST YEAR TRANSITION SEMINAR	SEM	BLAIS00138	W	10:00 AM-10:50 AM	Salvia M.	1	
28035	FS 0104	FIRST YEAR TRANSITION SEMINAR	SEM	SWRTS00110	R	02:30 PM-03:20 PM	Spaeth I.	1	
<b>GEOG</b>									
20562	GEOG 0101	WORLD REGIONAL GEOGRAPHY	LEC	EITB00221	T R	02:30 PM-03:45 PM	Strickland A.	3	GE:Cultures-Global
		<i>2 seat reserved for International Studies minor</i>							
26800	GEOG 0101	WORLD REGIONAL GEOGRAPHY	LEC	WEBTBA		-	Strickland A.	3	GE:Cultures-Global
		<i>Web course</i>							
<b>GEOL</b>									
23384	GEOL 0108	PALEOBIOLOGY	LEC	FISHR0112A	T R	01:00 PM-02:15 PM	Frantescu O.	3	GE:Life or Physical Sci
25407	GEOL 0118	PALEOBIOLOGY LAB	CLB	FISHR0112A	T	02:30 PM-05:30 PM	Frantescu O.	1	GE:Life or Physical Sci
27984	GEOL 1452	CAPSTONE: GEOLOGY	LEC	FISHR0112A	M W	04:30 PM-05:45 PM	Frantescu O.	2	
<b>GSWS</b>									
31881	GSWS 0101	INT GNDR, SEXTY, WOMEN'S STDS	LEC	SWRTS00111	T R	04:00 PM-05:15 PM	Eckstrom S.	3	GE:Cultures
<b>HIST</b>									
31861	HIST 0105	EUROPE IN THE 20TH CENTURY	LEC	SWRTS00209M	W F	10:00 AM-10:50 AM	Flanagan D.	3	GE:History
31864	HIST 0107	US HISTORY 2	LEC	EITB00211	T R	04:00 PM-05:15 PM	Troester P.	3	GE:History
26711	HIST 0128	GLOBAL HISTORY	LEC	SWRTS00209M	W F	11:00 AM-11:50 AM	Flanagan D.	3	GE:History-Global
31862	HIST 0202	WORLD WAR I	LEC	SWRTS00209M	W F	01:00 PM-01:50 PM	Flanagan D.	3	GE:History
31860	HIST 0216	U.S. WOMEN'S HISTRY SINCE 1865	LEC	EITB00211	T R	02:30 PM-03:45 PM	Troester P.	3	GE:History
31865	HIST 1307	FRANCE SINCE 1789	LEC	SWRTS00209M	W F	02:00 PM-02:50 PM	Flanagan D.	3	GE:History
29999	HIST 1329	MEXICO & THE U.S SINCE 1821	LEC	EITB00221	M W	03:00 PM-04:15 PM	Troester P.	3	GE:History-Global
26710	HIST 1449	CAPSTONE 1: RESEARCH METHODS	LEC	EITB00221	M W	04:30 PM-05:45 PM	Troester P.	3	
		<i>Cross-listed with PS 1449</i>							

CRN	SUBJ/ NUM	TITLE	TYPE	BLD/ROOM	DAYS	TIMES	INSTRUCTOR	CR	GE CATEGORY
<b>HMGT</b>									
31790	HMGT 0210	LGL ISS HOSP/TLY/TOURISM INDUST	LEC	SWRTS00107M	W F	11:00 AM-11:50 AM	Campogiani L.	3	
29650	HMGT 0220	FOODSERVICE MANAGEMENT	LEC	SWRTS00107M	W F	10:00 AM-10:50 AM	Campogiani L.	3	
<b>HPEDU</b>									
23339	HPEDU 1300	ADAPTIVE PHYSICAL EDUCATION	LEC	SFCTR0165C	M W F	09:00 AM-09:50 AM	Davis A.	3	
25699	HPEDU 1321	METHODS OF TEACHING HEALTH	LEC	SFCTR0165C	M W F	08:00 AM-08:50 AM	Davis A.	3	
27976	HPEDU 1330	MOTOR BEHAVIOR	LEC	SFCTR0165C	M W F	10:00 AM-10:50 AM	Davis A.	3	
<b>HPRED</b>									
31792	HPRED 1301	SPORTS MARKETING	LEC	BLAIS00121	M W F	12:00 PM-12:50 PM	Rouff K.	3	
31793	HPRED 1308	COACHING STUDIES	PRA	SFCTR00158	M W F	01:00 PM-01:50 PM	Phillips C.	3	
25294	HPRED 1407	FACILITY AND EVENT MANAGEMENT	LEC	SWRTS00110M	W F	10:00 AM-10:50 AM	Rouff K.	3	
31791	HPRED 1425	SPORT ECONOMICS AND FINANCE	LEC	BLAIS00121	M W F	11:00 AM-11:50 AM	Rouff K.	3	
29655	HPRED 1452	CAPSTONE: SPRT & RECREATN MGMT	SEM	BLAIS00138	T R	01:00 PM-02:15 PM	Campogiani L.	3	
		<i>Cross listed with MGMT 1451 for Hospitality and Sport and Rec Mgmt</i>							
<b>IA</b>									
15992	IA 0101	ARTS AWARENESS	SEM	BLAIS00114	M W	03:00 PM-04:15 PM	Ewert K.	3	GE:Arts
		<i>Hybrid course meets all Wednesdays and some Mondays. Attendance at arts events required.</i>							
28121	IA 1451	CAPSTONE: INTERDIS ARTS	LEC	SWRTS00101	T	05:30 PM-08:00 PM	Mccabe N.	3	
<b>INTS</b>									
19798	INTS 0120	INDIA AND ITS CULTURES	LEC	BLAIS00138	M W F	12:00 PM-12:50 PM	Gajanan R.	3	GE:Cultures-Global
<b>LNSK</b>									
23393	LNSK 0250	COLLEGE SUCCESS SPECIAL TOPICS	LEC	HANLY00201	M	11:00 AM-11:50 AM	Shaw W.	1	
		<i>SKILLS FOR SUCCESS Reserved for TRIO SSS Students</i>							
23394	LNSK 0250	COLLEGE SUCCESS SPECIAL TOPICS	LEC	HANLY00201	M	01:00 PM-01:50 PM	Shaw W.	1	
		<i>PLANNING FOR SUCCESS Reserved for TRIO SSS Students</i>							
28012	LNSK 0250	COLLEGE SUCCESS SPECIAL TOPICS	LEC	HANLY00201	W	01:00 PM-01:50 PM	Collier-Kisler M.	1	
		<i>SUCCESS FROM THE START Reserved for TRIO SSS Students</i>							
<b>MATH</b>									
14006	MATH 0097	COLLEGE ALGEBRA 1	LEC	EITB00221	T R	11:00 AM-12:15 PM	Mazhar S.	3	
14007	MATH 0098	COLLEGE ALGEBRA 2	LEC	BLAIS00121	M W F	01:00 PM-01:50 PM	Binder R.	3	GE:Math Competency
		<i>Students planning to relocate to another Pitt campus should check with their advisor to verify the Math requirement.</i>							
16640	MATH 0098	COLLEGE ALGEBRA 2	LEC	BLAIS00121	M W F	02:00 PM-02:50 PM	Binder R.	3	GE:Math Competency
		<i>Students planning to relocate to another Pitt campus should check with their advisor to verify the Math requirement.</i>							
25538	MATH 0098	COLLEGE ALGEBRA 2	LEC	FISHR00111	T R	04:00 PM-05:15 PM	Mazhar S.	3	GE:Math Competency
		<i>Students planning to relocate to another Pitt campus should check with their advisor to verify the Math requirement.</i>							
26768	MATH 0098	COLLEGE ALGEBRA 2	LEC	FISHR00111	T R	02:30 PM-03:45 PM	Mazhar S.	3	GE:Math Competency
		<i>Students planning to relocate to another Pitt campus should check with their advisor to verify the Math requirement.</i>							
29703	MATH 0098	COLLEGE ALGEBRA 2	LEC	SWRTS00161M	W F	10:00 AM-10:50 AM	Choo C.	3	GE:Math Competency
		<i>Students planning to relocate to another Pitt campus should check with their advisor to verify the Math requirement.</i>							
13496	MATH 0110	FUNDAMENTALS OF MATHEMATICS	LEC	FISHR00207	M W	04:30 PM-05:45 PM	Mazhar S.	3	GE:Math Competency
13497	MATH 0132	PRECALCULUS	LEC	SWRTS00207M	W F	09:45 AM-10:50 AM	Drignei M.	4	GE:Comp Sci or Math Compt
29704	MATH 0133	STATISTICS	LEC	FISHR00207	M W F	08:00 AM-09:05 AM	Drignei M.	4	GE:Computational Sciences
13498	MATH 0136	APPLIED CALCULUS	LEC	BLAIS00138	M W F	08:45 AM-09:50 AM	Kleiner H.	4	GE:Comp Sci or Math Compt
13499	MATH 0140	CALCULUS 1	LEC	FISHR00208	M W F	09:45 AM-10:50 AM	Buliga M.	4	GE:Comp Sci or Math Compt



CRN	SUBJ/ NUM	TITLE	TYPE	BLD/ROOM	DAYS	TIMES	INSTRUCTOR	CR	GE CATEGORY
-----	-----------	-------	------	----------	------	-------	------------	----	-------------

### **MATH**

28059	MATH 0142	TECHNICAL CALCULUS I	LEC	EITB00221	M W F	09:45 AM-10:50 AM	Rezaie B.	4	
29706	MATH 0143	TECHNICAL CALCULUS II	LEC	EITB00221	M W F	11:00 AM-12:05 PM	Ranjan V.	4	
29707	MATH 0144	TECHNICAL DIFF EQUATIONS	LEC	EITB00222	M W F	02:00 PM-03:05 PM	Ranjan V.	4	
13500	MATH 0150	CALCULUS 2	LEC	FISHR00207	M W F	11:00 AM-12:05 PM	Buliga M.	4	
14008	MATH 0201	CALCULUS 3	LEC	SWRTS00207	M W F	11:00 AM-12:05 PM	Drignei M.	4	
14375	MATH 0206	LINEAR ALGEBRA	LEC	FISHR00111	M W F	01:00 PM-01:50 PM	Buliga M.	3	
31821	MATH 1312	ABSTRCT ALGBRA & NUMBER THEORY	LEC	FISHR00111	M W F	02:00 PM-03:05 PM	Buliga M.	4	

### **MET**

28060	MET 1301	FLUID MECHANICS	LEC	EITB00222	M W F	01:00 PM-01:50 PM	Rezaie B.	3	
28061	MET 1302	FLUID MECHANICS LAB	CLB	EITB00111	R	01:00 PM-04:00 PM	Rezaie B.	1	
32350	MET 1303	THERMODYNAMICS	LEC	EITB00211	M W	03:00 PM-04:15 PM	Rezaie B.	3	
31823	MET 1304	MATERIALS	LEC	EITB00110	T R	11:00 AM-12:15 PM	Ranjan V.	3	
31824	MET 1305	MATERIALS LAB	CLB	EITB00110	R	06:00 PM-09:00 PM	Ranjan V.	1	
31825	MET 1306	CADD/CAE	LEC	EITB00220	M	01:00 PM-02:50 PM	Karunathilake H2		
29708	MET 1309	ENGINEERING MEASUREMENTS II	LEC	EITB00123	T	01:00 PM-02:40 PM	Karunathilake H2		
31826	MET 1400	MANUFACTURING PROCESSES	LEC	EITB00220	M W	04:30 PM-05:45 PM	Karunathilake H3		
29915	MET 1401	MANUFACTURING LAB	CLB	EITB00120	T	06:00 PM-09:00 PM	Karunathilake H.1		
29711	MET 1404	MACHINE DESIGN	LEC	EITB00211	M W	11:00 AM-12:15 PM	Karunathilake H3		
32059	MET 1405	FINITE ELEMENT METHOD	LEC	EITB00220	W	01:00 PM-03:30 PM	Karunathilake H3		
31827	MET 1407	SENIOR DESIGN PROJECT	LEC	EITB00121	T R	04:00 PM-05:15 PM	Rezaie B.	3	

### **MGMT**

29656	MGMT 0110	PRINCIPLES OF MANAGEMENT	LEC	SWRTS00105	T R	09:30 AM-10:45 AM	Campogiani L.	3	
22170	MGMT 1301	ORGANIZATIONAL BEHAVIOR <i>Cross-listed with SOC 1305.</i>	LEC	FISHR00207	M W F	03:00 PM-03:50 PM	Leck K.	3	
25295	MGMT 1303	BUSINESS ETHICS	LEC	SWRTS00207	M W	04:30 PM-05:45 PM	Gresock A.	3	
26793	MGMT 1304	BUSINESS LAW	LEC	SWRTS00111	W	06:00 PM-08:30 PM	Shade A.	3	
29659	MGMT 1305	INTERNATIONAL MANAGEMENT	LEC	SWRTS00207	M W	03:00 PM-04:15 PM	Gresock A.	3	GE:Global
23403	MGMT 1320	HUMAN RESOURCES MANAGEMENT	LEC	SWRTS00111	T R	02:30 PM-03:45 PM	Gresock A.	3	
26756	MGMT 1449	ECONOMIC SYSTEMS	LEC	SWRTS00104	M W F	02:00 PM-02:50 PM	Maxson A.	3	
16355	MGMT 1451	CAPSTONE: STRATEGIC MGMNT <i>Capstone for Business Management and Accounting majors</i>	SEM	SWRTS00111	T R	01:00 PM-02:15 PM	Gresock A.	3	
31794	MGMT 1451	CAPSTONE: STRATEGIC MGMNT <i>Cross listed with HPRED 1452. For Hospitality &amp; Sport and Rec Mgmt.</i>	SEM	BLAIS00138	T R	01:00 PM-02:15 PM	Campogiani L.	3	

### **MILS**

29867	MILS 0102	BASIC LEADERSHIP <i>Must have transportation. Class meets at St. Bonaventure (Plassman P008)in Alleghany, NY. Instructor, MSG Brandon Manning</i>	LEC	TBATBA	R	01:00 PM-02:15 PM	Marrone C.	1	
22223	MILS 0104	BASIC LEADERSHIP LAB <i>Must have transportation. Class meets at St. Bonaventure in Alleghany, NY. Instructor, MSG Brandon Manning</i>	CLB	TBATBA	R	04:00 PM-06:00 PM	Marrone C.	1	

CRN	SUBJ/ NUM	TITLE	TYPE	BLD/ROOM	DAYS	TIMES	INSTRUCTOR	CR	GE CATEGORY
-----	-----------	-------	------	----------	------	-------	------------	----	-------------

### MILS

21478	MILS 0204	LEADERSHIP & TEAMWORK LAB	CLB	TBATBA	R	04:00 PM-06:00 PM	Marrone C.	1	
		<i>Must have transportation. Class meets at St. Bonaventure in Alleghany, NY. Instructor, MSG Brandon Manning</i>							
29873	MILS 0205	LEADERSHIP AND TEAMWORK	LEC	TBATBA	R	02:30 PM-03:45 PM	Marrone C.	2	
		<i>Must have transportation. Class meets at St. Bonaventure (Plassman P008) in Alleghany, NY. Instructor, MSG Brandon Manning</i>							
25223	MILS 1304	LEADERSHIP AND ETHICS	LEC	TBATBA	T R	01:00 PM-02:15 PM	Marrone C.	3	
		<i>Must have transportation. Class meets at St. Bonaventure (Plassman P011) in Alleghany, NY. Instructor, SFC Jeffery Beshears</i>							
25224	MILS 1305	LEADERSHIP AND ETHICS LAB	CLB	TBATBA	R	04:00 PM-06:00 PM	Marrone C.	1	
		<i>Must have transportation. Class meets at St. Bonaventure in Alleghany, NY. Instructor, SFC Jeffery Beshears</i>							
25225	MILS 1404	OFFICERSHIP	LEC	TBATBA	T R	02:30 PM-03:45 PM	Marrone C.	3	
		<i>Must have transportation. Class meets at St. Bonaventure (Plassman P011) in Alleghany, NY. Instructor, LTC John Luckie</i>							
25226	MILS 1405	OFFICERSHIP LAB	CLB	TBATBA	R	04:00 PM-06:00 PM	Marrone C.	1	
		<i>Must have transportation. Class meets at St. Bonaventure in Alleghany, NY. Instructor, LTC John Luckie</i>							

### MIS

14848	MIS 0103	COMPUTER APPLCS FOR MANAGEMENT	LEC	EITB00220	T R	11:00 AM-12:15 PM	Kline W.	3	
13535	MIS 0208	BUSINESS INFORMATION SYSTEMS	LEC	EITB00220	M W	09:30 AM-10:45 AM	Shaik S.	3	
27977	MIS 0208	BUSINESS INFORMATION SYSTEMS	LEC	EITB00220	M W	11:00 AM-12:15 PM	Kline W.	3	

### MRKT

20563	MRKT 1301	PRINCIPLES OF MARKETING	LEC	EITB00211	M W F	09:00 AM-09:50 AM	Childs J.	3	
20582	MRKT 1405	MARKETING MANAGEMENT	LEC	EITB00211	M W F	10:00 AM-10:50 AM	Childs J.	3	

### MUSIC

23348	MUSIC 0101	ELEMENTS OF MUSIC	LEC	BLAIS00138	T R	02:30 PM-03:45 PM	Gabriel R.	3	GE:Arts
13540	MUSIC 0195	APPLIED MUSIC	LEC	TBATBA		12:00 AM-12:00 AM	Gabriel R.	1	
		<i>GUITAR See Shelley Whitman (BH 103) for registration approval</i>							
16115	MUSIC 0195	APPLIED MUSIC	LEC	TBATBA		12:00 AM-12:00 AM	Gabriel R.	1	
		<i>VOICE See Shelley Whitman (BH 103) for registration approval</i>							
16120	MUSIC 0195	APPLIED MUSIC	LEC	TBATBA		12:00 AM-12:00 AM	Gabriel R.	1	
		<i>PIANO See Shelley Whitman (BH 103) for registration approval</i>							
16012	MUSIC 0214	VOCAL ARTS ENSEMBLE	CLB	BLAIS00138	M W	04:30 PM-05:20 PM	Gabriel R.	1	
		<i>There is also an option for non-credit participation. See Shelley Whitman (BH 103).</i>							
31786	MUSIC 0260	MUSIC IN FILM AND GAMING	LEC	BLAIS00138	T R	04:00 PM-05:15 PM	Young B.	3	GE:Arts

### NUR

23719	NUR 0112	COMPREHENSIVE NURSING 1	REC		T	-	Nuzzo J.	0	
		<i>BRMC</i>							
23720	NUR 0112	COMPREHENSIVE NURSING 1	REC		W	-	Leslie A.	0	
		<i>Kane</i>							
23722	NUR 0112	COMPREHENSIVE NURSING 1	REC			-	Turner M.	0	
		<i>WGH</i>							
28671	NUR 0112	COMPREHENSIVE NURSING 1	REC			-	Turner M.	0	
		<i>WGH</i>							
13501	NUR 0112	COMPREHENSIVE NURSING 1	LEC	SWRTS00162	RF	08:00 AM-12:00 PM	Turner M.	8	
		<i>Enrollment Services will register ASN students in this class. Clinical/lab rotations will be assigned to students at the start of term.</i>							
			LEC	SWRTS00162	RF	08:00 AM-12:00 PM	Leslie A.	8	
			LEC	SWRTS00162	RF	08:00 AM-12:00 PM	Dinger M.	8	
			LEC	SWRTS00162	RF	08:00 AM-12:00 PM	Boser M.	8	
13502	NUR 0113	PHARMACOLOGY IN NURSING	LEC	SWRTS00162	RF	01:00 PM-02:15 PM	Dinger M.	3	
13503	NUR 0212	COMPREHENSIVE NURSING 3	LEC	SWRTS00162MT		08:00 AM-12:00 PM	Dinger M.	9	
		<i>Enrollment Services will register ASN students in this class. Clinical/lab rotations will be assigned to students at the start of term.</i>							
			LEC	SWRTS00162MT		08:00 AM-12:00 PM	Leslie A.	9	
			LEC	SWRTS00162MT		08:00 AM-12:00 PM	Truman J.	9	

CRN	SUBJ/ NUM	TITLE	TYPE	BLD/ROOM	DAYS	TIMES	INSTRUCTOR	CR	GE CATEGORY
-----	-----------	-------	------	----------	------	-------	------------	----	-------------

## NUR

13503	NUR 0212	COMPREHENSIVE NURSING 3 <i>Enrollment Services will register ASN students in this class. Clinical/lab rotations will be assigned to students at the start of term.</i>	LEC	SWRTS00162MT		08:00 AM-12:00 PM	Boser M.	9	
			LEC	SWRTS00162MT		08:00 AM-12:00 PM	Bickford B.	9	

15198	NUR 1310	ETHICAL DIMENSIONS OF NURSING <i>Remote- synchronous and asynchronous</i>	LEC	WEBTBA	R	04:00 PM-07:00 PM	Fiorentino L.	3	
-------	----------	--	-----	--------	---	-------------------	---------------	---	--

13504	NUR 1403	ADVANCED CLINICAL PRACTICUM <i>Remote- synchronous and asynchronous</i>	PRA	WEBTBA	T	01:00 PM-04:00 PM	Truman J.	4	
			PRA	WEBTBA	T	01:00 PM-04:00 PM	Leslie A.	4	

31850	NUR 1450	TOPICS IN NURSING <i>POPULATION HEALTH Remote- synchronous and asynchronous</i>	LEC	WEBTBA	T	04:00 PM-07:00 PM	Leslie A.	3	
-------	----------	--	-----	--------	---	-------------------	-----------	---	--

16458	NUR 1451	CAPSTONE: PROFESSIONAL NURSING <i>Remote- synchronous and asynchronous</i>	SEM	WEBTBA	R	01:00 PM-04:00 PM	Truman J.	3	
-------	----------	---	-----	--------	---	-------------------	-----------	---	--

## PEDC

31798	PEDC 0108	PHYSCL COND/WEIGHT TRAINING 1 <i>Meets in the Fitness Center</i>	CLB	SFCTR TBA	M W	12:00 PM-12:50 PM	Foster Z.	1	GE:Physical Education
-------	-----------	---	-----	-----------	-----	-------------------	-----------	---	-----------------------

32136	PEDC 0116	DOWNHILL SKIING & SNOWBOARDING <i>Students are responsible for purchasing ski pass &amp; rentals if needed. Transportation is available-departing campus 4:15pm.</i>	CLB	TBATBA	R	04:15 PM-09:45 PM	Maley L.	1	GE:Physical Education
-------	-----------	---	-----	--------	---	-------------------	----------	---	-----------------------

22169	PEDC 0124	BASKETBALL	CLB	SFCTR00152	T R	09:00 AM-09:50 AM	Deloof J.	1	GE:Physical Education
-------	-----------	------------	-----	------------	-----	-------------------	-----------	---	-----------------------

14436	PEDC 0152	LIVING WELL	CLB	SFCTR00159	F	10:00 AM-11:40 AM	Graham D.	1	GE:Physical Education
-------	-----------	-------------	-----	------------	---	-------------------	-----------	---	-----------------------

30129	PEDC 0169	BASICS OF SOCCER	CLB	SFCTR00152	T R	04:00 PM-04:50 PM	Whitehurst N.	1	GE:Physical Education
-------	-----------	------------------	-----	------------	-----	-------------------	---------------	---	-----------------------

26801	PEDC 0186	YOGA <i>Meets in Wick Chapel</i>	CLB	WICKTBA	M W	06:00 PM-06:50 PM	Minard C.	1	GE:Physical Education
-------	-----------	-------------------------------------	-----	---------	-----	-------------------	-----------	---	-----------------------

28189	PEDC 0202	LIFEGUARDING	CLB	SFCTR00125	W	06:00 PM-07:40 PM	Schwab C.	1	GE:Physical Education
-------	-----------	--------------	-----	------------	---	-------------------	-----------	---	-----------------------

			CLB	SFCTR00126	W	06:00 PM-07:40 PM		1	
--	--	--	-----	------------	---	-------------------	--	---	--

31911	PEDC 0250	SPECIAL TOPICS <i>CARDIO LINE DANCING</i>	LEC	BLAIS00164	T	05:30 PM-07:10 PM	Thompson P.	1	GE:Physical Education
-------	-----------	--	-----	------------	---	-------------------	-------------	---	-----------------------

## PET

31820	PET 0207	BLK SHALE OF APPALACHIAN BASIN	LEC	FISHR0112A	M W	03:00 PM-04:15 PM	Frantescu O.	3	
-------	----------	--------------------------------	-----	------------	-----	-------------------	--------------	---	--

## PHIL

19820	PHIL 0214	BIOETHICS <i>8 seats reserved for Rad. Sci. majors</i>	LEC	SWRTS00237	M W	04:30 PM-05:45 PM	Morgan J.	3	GE:Philosophical Inquiry
-------	-----------	---	-----	------------	-----	-------------------	-----------	---	--------------------------

31867	PHIL 1306	GENDER, RACE, & THE ENVRNMNT	LEC	SWRTS00237	T	05:30 PM-08:00 PM	Morgan J.	3	GE:Philosophical Inquiry
-------	-----------	------------------------------	-----	------------	---	-------------------	-----------	---	--------------------------

## PHYS

30618	PHYS 0101	INTRODUCTION TO PHYSICS 1	LEC	FISHR00208	M W F	02:00 PM-02:50 PM	Yousif H.	4	GE:Physical Science
-------	-----------	---------------------------	-----	------------	-------	-------------------	-----------	---	---------------------

30619	PHYS 0101	INTRODUCTION TO PHYSICS 1	LAB	FISHR0105D	T	06:00 PM-09:00 PM	Choo C.	0	GE:Physical Science
-------	-----------	---------------------------	-----	------------	---	-------------------	---------	---	---------------------

33225	PHYS 0101	INTRODUCTION TO PHYSICS 1	LAB	FISHR0105D	T	09:00 AM-12:00 PM	Choo C.	0	GE:Physical Science
-------	-----------	---------------------------	-----	------------	---	-------------------	---------	---	---------------------

13487	PHYS 0102	INTRODUCTION TO PHYSICS 2	LEC	SWRTS00207	M W F	02:00 PM-02:50 PM	Choo C.	4	GE:Physical Science
-------	-----------	---------------------------	-----	------------	-------	-------------------	---------	---	---------------------

13488	PHYS 0102	INTRODUCTION TO PHYSICS 2	LAB	FISHR0105D	R	01:00 PM-04:00 PM	Choo C.	0	GE:Physical Science
-------	-----------	---------------------------	-----	------------	---	-------------------	---------	---	---------------------

27173	PHYS 0102	INTRODUCTION TO PHYSICS 2	LAB	FISHR0105D	M	06:00 PM-09:00 PM	Choo C.	0	GE:Physical Science
-------	-----------	---------------------------	-----	------------	---	-------------------	---------	---	---------------------

13489	PHYS 0103	CONCEPTS OF MODERN PHYSICS	LEC	FISHR00107	M W F	09:00 AM-09:50 AM	Yousif H.	3	GE:Physical Science
-------	-----------	----------------------------	-----	------------	-------	-------------------	-----------	---	---------------------

20564	PHYS 0201	FOUNDATIONS OF PHYSICS 1	LEC	FISHR00207	T R	04:00 PM-05:45 PM	Choo C.	4	GE:Physical Science
-------	-----------	--------------------------	-----	------------	-----	-------------------	---------	---	---------------------

13490	PHYS 0202	FOUNDATIONS OF PHYSICS 2	LEC	FISHR00208	M W F	12:45 PM-01:50 PM	Yousif H.	4	GE:Physical Science
-------	-----------	--------------------------	-----	------------	-------	-------------------	-----------	---	---------------------

16643	PHYS 0204	FOUNDATIONS OF PHYSICS 2 LAB	CLB	FISHR0105D	T	01:00 PM-04:00 PM	Choo C.	1	GE:Physical Science
-------	-----------	------------------------------	-----	------------	---	-------------------	---------	---	---------------------

CRN	SUBJ/ NUM	TITLE	TYPE	BLD/ROOM	DAYS	TIMES	INSTRUCTOR	CR	GE CATEGORY
<b>PR</b>									
21407	PR 0101	INTRODCTN TO PUBLIC RELATIONS	LEC	SWRTS00104	T R	09:30 AM-10:45 AM	Amevor E.	3	GE:Behavioral Sciences
<b>PS</b>									
25293	PS 0102	AMERICAN POLITICAL PROCESS	LEC	SWRTS00209	M W	04:30 PM-05:45 PM	Robar S.	3	GE:Political Science
31868	PS 0102	AMERICAN POLITICAL PROCESS	LEC	SWRTS00209	M W	03:00 PM-04:15 PM	Robar S.	3	GE:Political Science
28036	PS 0103	COMPARATIVE POLITICS	LEC	SWRTS00237	T R	01:00 PM-02:15 PM	de Vries-Jordan	3	GE:Political Science-Global
31869	PS 0207	CONGRESS AND THE PRESIDENCY	LEC	SWRTS00209	T R	04:00 PM-05:15 PM	Robar S.	3	GE:Political Science
31870	PS 0225	WOMEN IN POLITICS	LEC	SWRTS00237	T R	09:30 AM-10:45 AM	de Vries-Jordan	3	GE:Political Science-Global
31871	PS 1307	LIBRLSM, CONSERVATISM & SOCLSM	LEC	SWRTS00209	T R	02:30 PM-03:45 PM	Robar S.	3	GE:Political Science
31969	PS 1310	CONSTITUTIONAL LAW	LEC	SWRTS00104	T R	01:00 PM-02:15 PM	Bish D.	3	GE:Political Science
31866	PS 1385	GLOBAL ENVIRONMENTAL POLITICS	LEC	SWRTS00237	M W	11:00 AM-12:15 PM	Morgan J.	3	GE:Political Science-Global
25245	PS 1449	CAPSTONE 1: RESEARCH METHODS <i>Cross-listed with HIST 1449</i>	LEC	EITB00221	M W	04:30 PM-05:45 PM	Troester P.	3	
<b>PSY</b>									
13491	PSY 0101	INTRODUCTION TO PSYCHOLOGY	LEC	SWRTS00111	M W F	10:00 AM-10:50 AM	McHugh R.	3	GE:Behavioral Sciences
19805	PSY 0101	INTRODUCTION TO PSYCHOLOGY	LEC	SWRTS00105	T R	01:00 PM-02:15 PM	Page G.	3	GE:Behavioral Sciences
24199	PSY 0101	INTRODUCTION TO PSYCHOLOGY	LEC	SWRTS00111	M W F	11:00 AM-11:50 AM	McHugh R.	3	GE:Behavioral Sciences
31876	PSY 0101	INTRODUCTION TO PSYCHOLOGY	LEC	SWRTS00105	T R	02:30 PM-03:45 PM	Fass W.	3	GE:Behavioral Sciences
13492	PSY 0202	CHILD DEVELOPMENT <i>15 seats reserved for Psychology majors</i>	LEC	SWRTS00237	M W F	02:00 PM-02:50 PM	McHugh R.	3	GE:Behavioral Sciences
15191	PSY 0204	PERSONALITY THEORIES	LEC	SWRTS00105	M W F	01:00 PM-01:50 PM	Leck K.	3	GE:Behavioral Sciences
31875	PSY 0206	ABNORMAL PSYCHOLOGY	LEC	SWRTS00111	M W	04:30 PM-05:45 PM	Page G.	3	GE:Behavioral Sciences
27985	PSY 0207	PROFESSIONAL SEMINAR IN PSY <i>All seats reserved for Psychology majors</i>	SEM	SWRTS00104	T R	02:30 PM-03:45 PM	Page G.	3	
29685	PSY 1301	EXPERIMENTAL PSYCHOLOGY <i>All seats reserved for Psychology majors</i>	LEC	SWRTS00236	T R	09:30 AM-10:45 AM	Fass W.	3	
29688	PSY 1304	HUMAN MEMORY	LEC	SWRTS00236	M W F	10:00 AM-10:50 AM	Fass W.	3	
31877	PSY 1307	PSYCHOLOGY OF MUSIC	LEC	SWRTS00108	T R	01:00 PM-02:15 PM	Leck K.	3	
31878	PSY 1311	SOCIOEMOTIONAL DEVELOPMENT	LEC	SWRTS00237	M W	03:00 PM-04:15 PM	McHugh R.	3	
31879	PSY 1406	LEARNING AND BEHAVIOR	LEC	SWRTS00236	M W F	11:00 AM-11:50 AM	Fass W.	3	
19806	PSY 1407	COUNSELING PSYCHOLOGY	LEC	SWRTS00104	T R	04:00 PM-05:15 PM	Page G.	3	
19807	PSY 1408	COUNSELING PSYCHOLOGY LAB	CLB	SWRTS00238	R	06:00 PM-09:00 PM	Page G.	1	
<b>RADSC</b>									
25449	RADSC 1301	RADSCI CONTRACTUAL TERM <i>BRMC portion of program. Enrollment registers Rad Sci students</i>	CLN			-	Boser M.	vr	
25448	RADSC 1401	RADSCI CONTRACTUAL TERM <i>BRMC portion of program. Enrollment registers Rad Sci students</i>	CLN			-	Boser M.	vr	
<b>SOC</b>									
13505	SOC 0101	INTRODUCTION TO SOCIOLOGY	LEC	EITB00222	T R	04:00 PM-05:15 PM	Palmer F.	3	GE:Behavioral Sciences
13506	SOC 0101	INTRODUCTION TO SOCIOLOGY	LEC	SWRTS00209	W	06:00 PM-08:30 PM	Zapel K.	3	GE:Behavioral Sciences

CRN	SUBJ/ NUM	TITLE	TYPE	BLD/ROOM	DAYS	TIMES	INSTRUCTOR	CR	GE CATEGORY
<b>SOC</b>									
26759	SOC 0202	SOCIOLOGY OF SPORT	LEC	SWRTS00110M	W F	09:00 AM-09:50 AM	Rouff K.	3	GE:Behavioral Sciences
31856	SOC 0206	CRIMINOLOGY <i>Cross listed with ADMJ 0206</i>	LEC	SWRTS00207	T R	02:30 PM-03:45 PM	Bish D.	3	GE:Behavioral Sciences
31874	SOC 0206	CRIMINOLOGY <i>Cross listed with ADMJ 0206</i>	LEC	SWRTS00108	T R	09:30 AM-10:45 AM	Bish D.	3	GE:Behavioral Sciences
13507	SOC 1305	ORGANIZATIONAL BEHAVIOR <i>Cross listed with MGMT 1301</i>	LEC	FISHR00207	M W F	03:00 PM-03:50 PM	Leck K.	3	
31880	SOC 1316	SOCIAL AND CULTURAL CHANGE	LEC	SWRTS00105M	W F	02:00 PM-02:50 PM	Leck K.	3	GE:Global
20540	SOC 1401	SOCIAL RESEARCH	LEC	SWRTS00108	T R	02:30 PM-03:45 PM	Leck K.	3	
<b>SPAN</b>									
28120	SPAN 0102	ELEMENTARY SPANISH 2	LEC	SWRTS00161M	W F	11:00 AM-11:50 AM	Jensen M.	3	GE:Language/Global
31787	SPAN 1308	ADVANCED SPANISH	LEC	SWRTS00101M	W F	02:00 PM-02:50 PM	Jensen M.	3	GE:Language/Global
<b>THEA</b>									
20019	THEA 0103	THEATRE PRACTICUM: PERFORMANCE	PRA	BLAIS00164	M W F	01:00 PM-02:15 PM	Ewert K.	vr	GE:Arts
29600	THEA 0203	PLAY ANALYSIS <i>Web course</i>	LEC	WEBTBA		-	Ewert K.	3	GE:Arts
<b>WRITNG</b>									
24296	WRITNG 0109	INTRO TO CREATIVE WRITING	LEC	SWRTS00101	T R	01:00 PM-02:15 PM	Mccabe N.	3	GE:Arts
21408	WRITNG 0111	LITRY EDITING/MAGAZINE PROD 1	SEM	SWRTS00101	T R	02:30 PM-03:45 PM	Bell K.	3	GE:Arts
31788	WRITNG 0208	WRITING NATURE,PLACE & ENV ISS	LEC	SWRTS00101	T R	04:00 PM-05:15 PM	Mccabe N.	3	GE:Arts
15190	WRITNG 0211	LITRY EDITING/MAGAZINE PROD 2	SEM	SWRTS00101	T R	02:30 PM-03:45 PM	Bell K.	3	GE:Arts
13537	WRITNG 1305	TECHNICAL WRITING <i>6 Seats reserved for Rad Sci. &amp; 5 seats for Mechanical or Energy Engineering 1 ech</i>	SEM	SWRTS00107	T R	04:00 PM-05:15 PM	Bell K.	3	
27983	WRITNG 1311	LITRY EDITING/MAGAZINE PROD 3	SEM	SWRTS00101	T R	02:30 PM-03:45 PM	Bell K.	3	GE:Arts
31785	WRITNG 1451	CAPSTONE: WRITING	SEM	SWRTS00101	T	05:30 PM-08:00 PM	Mccabe N.	3	



## Remote and Hybrid Courses

CRN	SUBJ/ NUM	TITLE	TYPE	BLD/ROOM	DAYS	TIMES	INSTRUCTOR	CR	GE CATEGORY
<b>ACCT</b>									
27972	ACCT 0202	MANAGERIAL ACCOUNTING CONCEPTS	LEC	WEBTBA		-	Crawford J.	3	
<i>Web course</i>									
<b>ANTH</b>									
29819	ANTH 0235	APPALACHIAN CULTURE	LEC	SWRTS00209	T R	11:00 AM-12:15 PM	Mulcahy R.	3	GE:Cultures
<i>Hybrid course. Meets remote on Tuesdays and face-to-face on Thursdays.</i>									
<b>BIOL</b>									
13477	BIOL 0202	MICROBIOL FOR ALLD HEALTH PROF	LEC	FISHR0105D	M	01:00 PM-03:00 PM	Yaich L.	4	
<i>12 seats reserved for ASN.Hybrid course.</i>									
<b>CHEM</b>									
15197	CHEM 0187	DRUGS AND SOCIETY	LEC	WEBTBA		12:00 AM-12:00 AM	Soriano D.	3	GE:Physical Science
<i>Web course</i>									
<b>CIST</b>									
24595	CIST 1310	SYSTEMS ANALYSIS AND DESIGN	LEC	EITB00213	T	01:00 PM-02:15 PM	Wang Y.	3	
<i>Hybrid course</i>									
15196	CIST 1451	CAPSTONE: CIS&T	SEM	EITB00213	R	01:00 PM-02:15 PM	Wang Y.	3	
<i>Hybrid course</i>									
<b>ECON</b>									
18973	ECON 0206	INTERMEDIATE MICROECONOMICS	LEC	SWRTS00105	T R	06:00 PM-07:15 PM	Gajanan S.	3	
<i>Hybrid course</i>									
<b>EDUC</b>									
24490	EDUC 1325	DEVELOPMENT OF CHILDREN	LEC	SWRTS00161	T R	02:30 PM-03:45 PM	Chitiyo J.	3	
<i>Hybrid course</i>									
15989	EDUC 1330	EDUCATING CHILDREN	LEC	SWRTS00161	T R	01:00 PM-02:15 PM	Chitiyo J.	3	
<i>Hybrid course</i>									
14075	EDUC 1481	STUDENT TEACHING	PRA	SFCTR00159	W	04:00 PM-06:30 PM	Chitiyo J.	12	
<i>Hybrid course</i>									
<b>EXSCI</b>									
25211	EXSCI 0109	MEDICAL TERMINOLOGY	LEC	WEBTBA		-	Preston C.	2	
<i>Web course</i>									
<b>GEOG</b>									
26800	GEOG 0101	WORLD REGIONAL GEOGRAPHY	LEC	WEBTBA		-	Strickland A.	3	GE:Cultures-Global
<i>Web course</i>									
<b>IA</b>									
15992	IA 0101	ARTS AWARENESS	SEM	BLAIS00114	M W	03:00 PM-04:15 PM	Ewert K.	3	GE:Arts
<i>Hybrid course meets all Wednesdays and some Mondays. Attendance at arts events required.</i>									
<b>THEA</b>									
29600	THEA 0203	PLAY ANALYSIS	LEC	WEBTBA		-	Ewert K.	3	GE:Arts
<i>Web course</i>									

## Spring Term 2025 Final Exam Schedule

<u>TIME CLASS BEGAN</u>	<u>EXAM DATE</u>	<u>EXAM TIME</u>
	April 24, <b>Thursday</b>	
NUR-0112/ NUR-0212		8:00 - 11:00 a.m.
MWF        11:00 a.m.		12:00 - 2:00 p.m.
MWF or MW 3:00 p.m.		3:00 - 5:00 p.m.
M or MW     6:00 p.m.		6:00 - 8:00 p.m.

### April 25, **Friday**

TR            8:00 a.m.		8:00 - 10:00 a.m.
TR            11:00 a.m.		10:00 a.m.- 12:00 p.m.
TR            1:00 p.m.		12:00 - 2:00 p.m.
TR            4:00 p.m.		3:00 - 5:00 p.m.
T or TR      6:00 p.m.		6:00 - 8:00 p.m.

### April 28, **Monday**

MWF         9:00 a.m.		9:00- 11:00 a.m.
MWF         1:00 p.m.		12:00 - 2:00 p.m.
MW or MWF 4:00 p.m.		3:00 - 5:00 p.m.
MW           4:30 p.m.		
W             6:00 p.m.		6:00 - 8:00 p.m.

### April 29, **Tuesday**

TR            9:30 a.m.		9:00 - 11:00 a.m.
TR            2:30 p.m.		12:00 - 2:00 p.m.
MWF         10:00 a.m.		3:00 - 5:00 p.m.
R             6:00 p.m.		5:30 - 7:30 p.m.

### April 30, **Wednesday**

MWF or MW 8:00 a.m.		8:00 - 10:00 a.m.
MWF         12:00 p.m.		10:00 - 12:00 p.m.
MWF         2:00 p.m.		12:00 - 2:00 p.m.

***Final exams will be held in the regularly scheduled classroom unless otherwise noted.***

*Please see your instructor to determine the day and time for your final if your course does not fit the grid above. Students having more than two exams on one day (excluding evening classes) may petition their instructors for assistance in rescheduling one exam at a time mutually agreeable to student and instructor. If it is not possible to reach an agreement with one of the instructors, students should contact the appropriate division chair.*

# Academic Services



The Academic Coaching and Tutoring Center (ACTC) offers a range of academic coaching and peer tutoring services to currently enrolled UPB students. These services provide the extra assistance needed to achieve academic and personal success. Whether a student requires content-specific assistance or learning services focused on test preparation, time management, and note-taking, the ACTC is here to help!

Directions for scheduling a tutoring or academic coaching appointment:  
<https://upb.pitt.edu/how-make-appointment>

Bernie Picklo, Coordinator  
[bip47@pitt.edu](mailto:bip47@pitt.edu)  
814.362.7674

## TRIO Student Support Services

231 Hanley Library

TRIO SSS is a federally funded program providing individual academic planning, academic/personal success courses, financial/economic literacy education, and career and graduate school planning to students who are first-generation, income eligible, and/or have a disability.

Interested students must apply to the program and be accepted in order to receive services.

Contact (814) 362-7566 or at  
[UPBTRIO@pitt.edu](mailto:UPBTRIO@pitt.edu) for more information.

## Disability Resources and Services

**Commons Building, Student Affairs Suite, Room 221**

Disability Management services – your partner in equal access

- Individualized support
- Accommodations to support any type of disability – physical, medical, psychiatric or learning
- Test Proctoring
- Assistive Technology
- Students access this service by scheduling an appointment by calling 814-362-7609

## The Academic Advising Center 218 Hanley-814-362-7533

The Academic Advising Center provides academic assistance and support to all Pitt-Bradford students. The Academic Advising can help students:

- Understanding your degree requirements, creating a graduation plan
- Changing or declaring a major or minor
- Understanding academic policies and procedures
- Adjusting your schedule during the drop/add period
- Withdrawing from a class
- Creating a Career Portfolio
- Resume/Cover Letter Writing
- Career Coaching

Directions for scheduling an appointment:  
<https://upb.pitt.edu/how-make-appointment>

## Mathematics Center-251 Hanley

Our purpose is to offer free math tutoring to any student enrolled in a math course at UPB. Math competency is one of the University's requirements for graduation and an essential part of development of critical thinking skills. We help students not only grasp the concepts of math, but to also help to develop specific math study skills necessary to succeed in math courses. We understand that continued student success is about more than just grades. We strive to encourage critical thinking, resource referencing, time management, pattern recognition, and study skills to create confident and self-sufficient learners. Our services include homework help, exam prep and corrections, and help calculator usage, among other things. Directions/details for scheduling may be found at <https://www.upb.pitt.edu/how-make-appointment>.

## Writing Center 250 Hanley

Want to be a stronger writer? A better reader?  
Empower yourself at the Writing Center!

The Writing Center has experienced faculty consultants available to assist student writers of all levels and abilities at any stage of the writing process, from brainstorming and drafting to revision, editing, formatting, and achieving stylistic punch and sophistication. Common areas of focus include thesis statements, essay organization, word choice, recognizing pattern errors in grammar and punctuation, evaluating and using sources, managing in-text citations, and critical reading skills.

Schedule an appointment using "Navigate Student" or visit the Writing Center's website: <https://upb.pitt.edu/academics/academic-resources/writing-center>

[ckula@pitt.edu](mailto:ckula@pitt.edu) 814-362-7594  
[wcenter@pitt.edu](mailto:wcenter@pitt.edu) 814-362-0253

Write On!